

## Product datasheet for **TA376098**

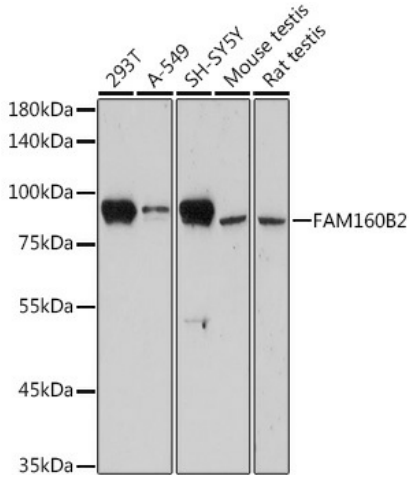
### **RAI16 (FAM160B2) Rabbit Polyclonal Antibody**

#### **Product data:**

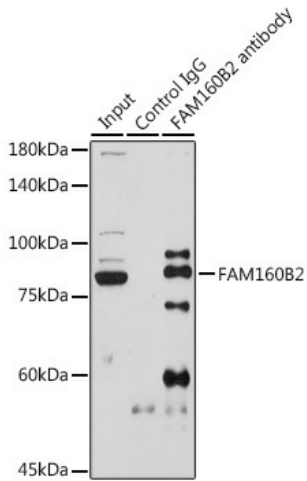
Product Type:	Primary Antibodies
Applications:	ICC/IF, IP, WB
Recommended Dilution:	WB,1:500 - 1:2000 IF,1:50 - 1:200 IP,1:50 - 1:200
Reactivity:	Human, Mouse, Rat
Host:	Rabbit
Isotype:	IgG
Clonality:	Polyclonal
Immunogen:	Recombinant protein of human FAM160B2.
Formulation:	Buffer: PBS with 0.02% sodium azide,50% glycerol,pH7.3.
Concentration:	lot specific
Purification:	Affinity purification
Conjugation:	Unconjugated
Storage:	Store at -20°C. Avoid freeze / thaw cycles.
Stability:	Shelf life: one year from despatch.
Predicted Protein Size:	82kDa
Gene Name:	family with sequence similarity 160 member B2
Database Link:	<a href="#">Entrez Gene 64760 Human Q86V87</a>
Background:	Able to activate MAPK/ERK and TGFB signaling pathways. May regulate the activity of genes involved in intestinal barrier function and immunoprotective inflammation (By similarity. May play a role in cell proliferation.
Synonyms:	FLJ11125; FLJ21801; MGC138352; RAI16



[View online »](#)

**Product images:**


Western blot analysis of extracts of various cell lines, using FAM160B2 antibody (TA376098) at 1:1000 dilution. | Secondary antibody: HRP Goat Anti-Rabbit IgG (H+L) at 1:10000 dilution. | Lysates/proteins: 25ug per lane. | Blocking buffer: 3% nonfat dry milk in TBST. | Detection: ECL Enhanced Kit . | Exposure time: 3min.



Immunoprecipitation analysis of 600ug extracts of Rat testis cells using 3ug FAM160B2 antibody (TA376098). Western blot was performed from the immunoprecipitate using FAM160B2 antibody (TA376098) at a dilution of 1:1000.