

Product datasheet for **TA376096S**

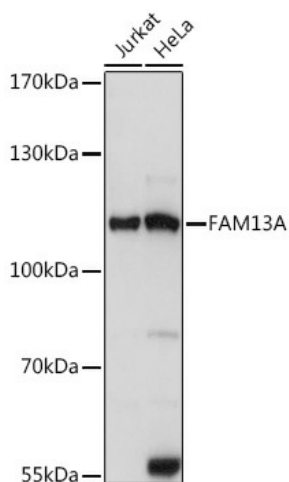
FAM13A Rabbit Polyclonal Antibody

Product data:

Product Type:	Primary Antibodies
Applications:	ELISA, WB
Recommended Dilution:	WB, 1:500 - 1:2000 ELISA, Recommended starting concentration is 1 µg/mL. Please optimize the concentration based on your specific assay requirements.
Reactivity:	Human
Modifications:	Unmodified
Host:	Rabbit
Isotype:	IgG
Clonality:	Polyclonal
Formulation:	Buffer: PBS with 0.02% sodium azide, 50% glycerol, pH 7.3.
Concentration:	lot specific
Purification:	Affinity purification
Conjugation:	Unconjugated
Storage:	Store at -20°C. Avoid freeze / thaw cycles.
Stability:	Shelf life: one year from despatch.
Predicted Protein Size:	117kDa
Gene Name:	family with sequence similarity 13 member A
Database Link:	Entrez Gene 10144 Human O94988
Background:	Predicted to enable GTPase activator activity. Predicted to be involved in regulation of small GTPase mediated signal transduction. Predicted to be located in cytosol. Implicated in chronic obstructive pulmonary disease.
Synonyms:	FAM13A1; FLJ34562; KIAA0914; MGC105131



[View online »](#)

Product images:

Western blot analysis of various lysates using FAM13A Rabbit pAb ([TA376096]) at 1:1000 dilution.

Secondary antibody: HRP-conjugated Goat anti-Rabbit IgG (H+L) (AS014) at 1:10000 dilution.

Lysates/proteins: 25µg per lane.

Blocking buffer: 3% nonfat dry milk in TBST.

Detection: ECL Basic Kit (RM00020).

Exposure time: 5s.