

## Product datasheet for **TA376093**

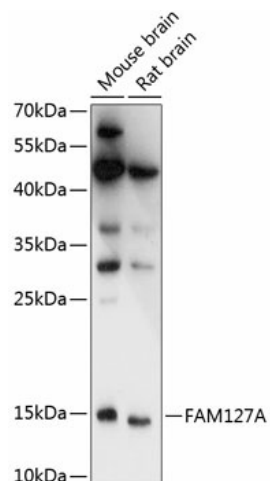
### **CXX1 (FAM127A) Rabbit Polyclonal Antibody**

#### Product data:

<b>Product Type:</b>	Primary Antibodies
<b>Applications:</b>	ELISA, WB
<b>Recommended Dilution:</b>	WB, 1:500 – 1:2000 ELISA, Recommended starting concentration is 1 µg/mL. Please optimize the concentration based on your specific assay requirements.
<b>Reactivity:</b>	Mouse, Rat
<b>Modifications:</b>	Unmodified
<b>Host:</b>	Rabbit
<b>Isotype:</b>	IgG
<b>Clonality:</b>	Polyclonal
<b>Formulation:</b>	Buffer: PBS with 0.01% thimerosal, 50% glycerol, pH 7.3.
<b>Concentration:</b>	lot specific
<b>Purification:</b>	Affinity purification
<b>Conjugation:</b>	Unconjugated
<b>Storage:</b>	Store at -20°C. Avoid freeze / thaw cycles.
<b>Stability:</b>	Shelf life: one year from despatch.
<b>Predicted Protein Size:</b>	13kDa
<b>Gene Name:</b>	family with sequence similarity 127 member A
<b>Database Link:</b>	<a href="#">A6ZKI3</a>
<b>Background:</b>	Predicted to be located in plasma membrane.
<b>Synonyms:</b>	CXX1; Mar8; MAR8C; Mart8; MART8C; MGC117411



**Product images:**



Western blot analysis of various lysates using FAM127A Rabbit pAb (TA376093) at 1:3000 dilution.

Secondary antibody: HRP-conjugated Goat anti-Rabbit IgG (H+L) at 1:10000 dilution.

Lysates/proteins: 25µg per lane.

Blocking buffer: 3% nonfat dry milk in TBST.

Detection: ECL Basic Kit .

Exposure time: 1s.