

Product datasheet for **TA376088S**

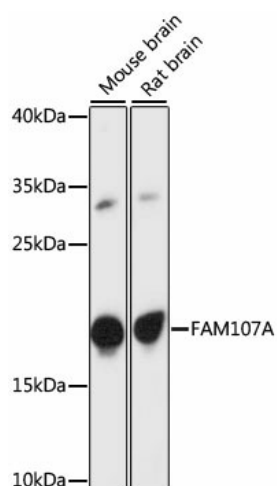
FAM107A Rabbit Polyclonal Antibody

Product data:

Product Type:	Primary Antibodies
Applications:	ELISA, WB
Recommended Dilution:	WB, 1:500 - 1:2000 ELISA, Recommended starting concentration is 1 µg/mL. Please optimize the concentration based on your specific assay requirements.
Reactivity:	Mouse, Rat
Modifications:	Unmodified
Host:	Rabbit
Isotype:	IgG
Clonality:	Polyclonal
Formulation:	Buffer: PBS with 0.02% sodium azide, 50% glycerol, pH 7.3.
Concentration:	lot specific
Purification:	Affinity purification
Conjugation:	Unconjugated
Storage:	Store at -20°C. Avoid freeze / thaw cycles.
Stability:	Shelf life: one year from despatch.
Predicted Protein Size:	17kDa
Gene Name:	family with sequence similarity 107 member A
Database Link:	O95990
Background:	Predicted to enable actin binding activity. Involved in several processes, including negative regulation of G1/S transition of mitotic cell cycle; negative regulation of focal adhesion assembly; and regulation of cytoskeleton organization. Located in several cellular components, including focal adhesion; ruffle membrane; and stress fiber.
Synonyms:	DRR1; FLJ30158; FLJ45473; TU3A

[View online »](#)

Product images:



Western blot analysis of various lysates using FAM107A Rabbit pAb (TA376088) at 1:1000 dilution.

Secondary antibody: HRP-conjugated Goat anti-Rabbit IgG (H+L) (AS014) at 1:10000 dilution.

Lysates/proteins: 25µg per lane.

Blocking buffer: 3% nonfat dry milk in TBST.

Detection: ECL Basic Kit (RM00020).

Exposure time: 90s.