

Product datasheet for **TA376043S**

EXTL2 Rabbit Polyclonal Antibody

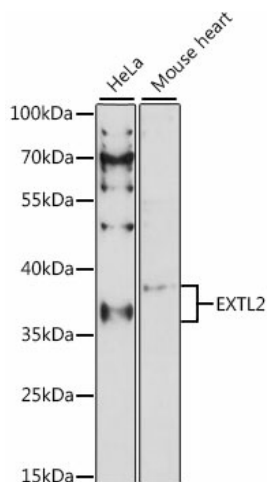
Product data:

Product Type:	Primary Antibodies
Applications:	ELISA, WB
Recommended Dilution:	WB, 1:500 - 1:2000 ELISA, Recommended starting concentration is 1 µg/mL. Please optimize the concentration based on your specific assay requirements.
Reactivity:	Human, Mouse
Modifications:	Unmodified
Host:	Rabbit
Isotype:	IgG
Clonality:	Polyclonal
Formulation:	Buffer: PBS with 0.02% sodium azide, 50% glycerol, pH 7.3.
Concentration:	lot specific
Purification:	Affinity purification
Conjugation:	Unconjugated
Storage:	Store at -20°C. Avoid freeze / thaw cycles.
Stability:	Shelf life: one year from despatch.
Predicted Protein Size:	37kDa
Gene Name:	exostosin-like glycosyltransferase 2
Database Link:	Entrez Gene 2135 Human Q9UBQ6
Background:	Enables alpha-1,4-N-acetylgalactosaminyltransferase activity and glucuronyl-galactosyl-proteoglycan 4-alpha-N-acetylglucosaminyltransferase activity. Involved in N-acetylglucosamine metabolic process and UDP-N-acetylgalactosamine metabolic process. Located in cytosol; endoplasmic reticulum; and nucleoplasm.
Synonyms:	alpha-1,4-N-acetylhexosaminyltransferase; EXTR2



[View online »](#)

Product images:



Western blot analysis of various lysates using EXTL2 Rabbit pAb ([TA376043]) at 1:1000 dilution. Secondary antibody: HRP-conjugated Goat anti-Rabbit IgG (H+L) (AS014) at 1:10000 dilution. Lysates/proteins: 25µg per lane. Blocking buffer: 3% nonfat dry milk in TBST. Detection: ECL Basic Kit (RM00020). Exposure time: 90s.