

Product datasheet for **TA376040S**

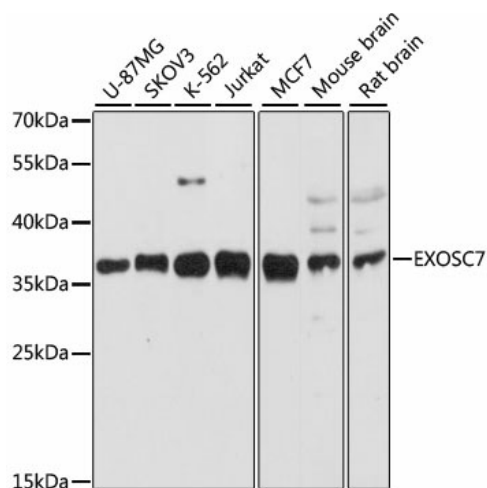
EXOSC7 Rabbit Polyclonal Antibody

Product data:

Product Type:	Primary Antibodies
Applications:	ELISA, WB
Recommended Dilution:	WB, 1:200 - 1:2000 ELISA, Recommended starting concentration is 1 µg/mL. Please optimize the concentration based on your specific assay requirements.
Reactivity:	Human, Mouse, Rat
Modifications:	Unmodified
Host:	Rabbit
Isotype:	IgG
Clonality:	Polyclonal
Formulation:	Buffer: PBS with 0.02% sodium azide, 50% glycerol, pH 7.3.
Concentration:	lot specific
Purification:	Affinity purification
Conjugation:	Unconjugated
Storage:	Store at -20°C. Avoid freeze / thaw cycles.
Stability:	Shelf life: one year from despatch.
Predicted Protein Size:	32kDa
Gene Name:	exosome component 7
Database Link:	Entrez Gene 23016 Human Q15024
Background:	Predicted to enable 3'-5'-exoribonuclease activity and RNA binding activity. Predicted to be involved in RNA metabolic process. Part of exosome (RNase complex).
Synonyms:	EAP1; FLJ26543; hRrp42p; KIAA0116; p8; RRP42; Rrp42p



[View online »](#)

Product images:


Western blot analysis of various lysates using EXOSC7 Rabbit pAb (TA376040) at 1:3000 dilution.

Secondary antibody: HRP-conjugated Goat anti-Rabbit IgG (H+L) (AS014) at 1:10000 dilution.

Lysates/proteins: 25µg per lane.

Blocking buffer: 3% nonfat dry milk in TBST.

Detection: ECL Basic Kit (RM00020).

Exposure time: 30s.