

Product datasheet for **TA376035S**

EXOSC10 Rabbit Polyclonal Antibody

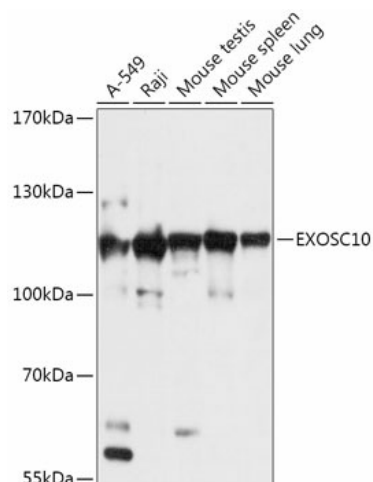
Product data:

Product Type:	Primary Antibodies
Applications:	ELISA, WB
Recommended Dilution:	WB, 1:500 - 1:2000 ELISA, Recommended starting concentration is 1 µg/mL. Please optimize the concentration based on your specific assay requirements.
Reactivity:	Human, Mouse, Rat
Modifications:	Unmodified
Host:	Rabbit
Isotype:	IgG
Clonality:	Polyclonal
Formulation:	Buffer: PBS with 0.02% sodium azide, 50% glycerol, pH 7.3.
Concentration:	lot specific
Purification:	Affinity purification
Conjugation:	Unconjugated
Storage:	Store at -20°C. Avoid freeze / thaw cycles.
Stability:	Shelf life: one year from despatch.
Predicted Protein Size:	101kDa
Gene Name:	exosome component 10
Database Link:	Entrez Gene 5394 Human Q01780
Background:	Enables 3'-5'-exoribonuclease activity. Involved in several processes, including RNA catabolic process; maturation of 5.8S rRNA; and negative regulation of telomere maintenance via telomerase. Located in cytosol; nuclear lumen; and transcriptionally active chromatin. Part of nuclear exosome (RNase complex).
Synonyms:	p2; p3; p4; PM-Scl; PM/Scl-100; PMSCL; PMSCL2; RRP6; Rrp6p



[View online »](#)

Product images:



Western blot analysis of various lysates using EXOSC10 Rabbit pAb (TA376035) at 1:1000 dilution.

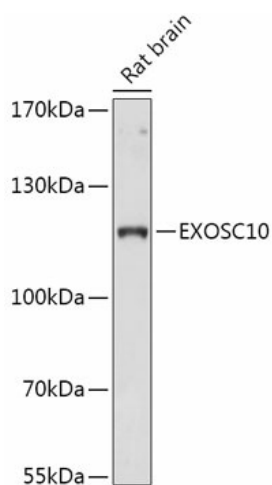
Secondary antibody: HRP-conjugated Goat anti-Rabbit IgG (H+L) (AS014) at 1:10000 dilution.

Lysates/proteins: 25µg per lane.

Blocking buffer: 3% nonfat dry milk in TBST.

Detection: ECL Basic Kit (RM00020).

Exposure time: 10s.



Western blot analysis of lysates from Rat brain