

Product datasheet for **TA376001S**

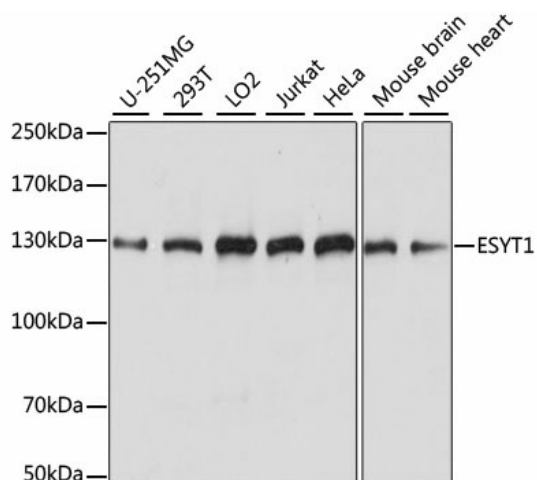
FAM62A (ESYT1) Rabbit Polyclonal Antibody

Product data:

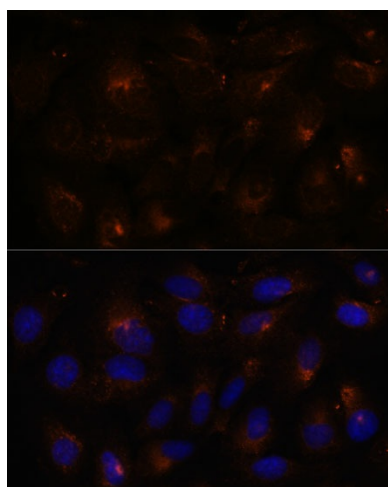
Product Type:	Primary Antibodies
Applications:	ELISA, ICC/IF, WB
Recommended Dilution:	WB, 1:200 - 1:2000 IF/ICC, 1:50 - 1:200 ELISA, Recommended starting concentration is 1 µg/mL. Please optimize the concentration based on your specific assay requirements.
Reactivity:	Human, Mouse, Rat
Modifications:	Unmodified
Host:	Rabbit
Isotype:	IgG
Clonality:	Polyclonal
Formulation:	Buffer: PBS with 0.02% sodium azide, 50% glycerol, pH 7.3.
Concentration:	lot specific
Purification:	Affinity purification
Conjugation:	Unconjugated
Storage:	Store at -20°C. Avoid freeze / thaw cycles.
Stability:	Shelf life: one year from despatch.
Predicted Protein Size:	123kDa
Gene Name:	extended synaptotagmin protein 1
Database Link:	Entrez Gene 23344 Human Q9BSJ8
Background:	Enables identical protein binding activity. Predicted to be involved in endoplasmic reticulum-plasma membrane tethering and lipid transport. Located in endoplasmic reticulum. Is integral component of endoplasmic reticulum membrane.
Synonyms:	E-Syt1; FAM62A; KIAA0747; MBC2

[View online »](#)

Product images:



Western blot analysis of various lysates using ESYT1 Rabbit pAb ([TA376001S]) at 1:1000 dilution. Secondary antibody: HRP-conjugated Goat anti-Rabbit IgG (H+L) (AS014) at 1:10000 dilution. Lysates/proteins: 25µg per lane. Blocking buffer: 3% nonfat dry milk in TBST. Detection: ECL Basic Kit (RM00020). Exposure time: 5s.



Immunofluorescence analysis of U-2 OS cells using ESYT1 Rabbit pAb ([TA376001S]) at dilution of 1:100. Secondary antibody: Cy3-conjugated Goat anti-Rabbit IgG (H+L) (AS007) at 1:500 dilution. Blue: DAPI for nuclear staining.