

## Product datasheet for **TA375989**

### ESAM Rabbit Polyclonal Antibody

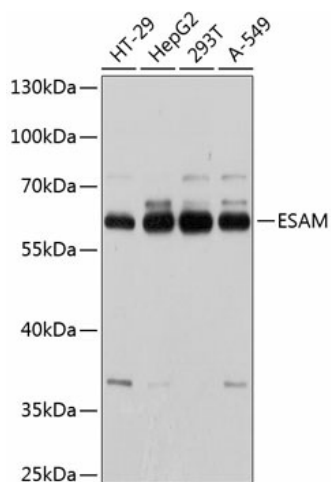
#### Product data:

Product Type:	Primary Antibodies
Applications:	WB
Recommended Dilution:	WB,1:500 - 1:2000
Reactivity:	Human
Modifications:	Unmodified
Host:	Rabbit
Isotype:	IgG
Clonality:	Polyclonal
Immunogen:	Recombinant fusion protein containing a sequence corresponding to amino acids 30-248 of human ESAM (NP_620411.2).
Formulation:	Buffer: PBS with 0.02% sodium azide,50% glycerol,pH7.3.
Concentration:	lot specific
Purification:	Affinity purification
Conjugation:	Unconjugated
Storage:	Store at -20°C. Avoid freeze / thaw cycles.
Stability:	Shelf life: one year from despatch.
Predicted Protein Size:	15kDa/41kDa
Gene Name:	endothelial cell adhesion molecule
Database Link:	<a href="#">Entrez Gene 90952 Human Q96AP7</a>
Background:	Can mediate aggregation most likely through a homophilic molecular interaction.
Synonyms:	2310008D05Rik; W117m



[View online »](#)

## Product images:



Western blot analysis of extracts of various cell lines, using ESAM antibody (TA375989) at 1:1000 dilution. | Secondary antibody: HRP Goat Anti-Rabbit IgG (H+L) at 1:10000 dilution. | Lysates/proteins: 25ug per lane. | Blocking buffer: 3% nonfat dry milk in TBST. | Detection: ECL Basic Kit . | Exposure time: 5s.