

## Product datasheet for **TA375984S**

### ERP27 Rabbit Polyclonal Antibody

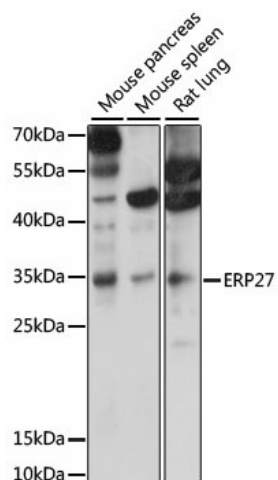
#### Product data:

Product Type:	Primary Antibodies
Applications:	WB
Recommended Dilution:	WB,1:500 - 1:2000
Reactivity:	Mouse, Rat
Modifications:	Unmodified
Host:	Rabbit
Isotype:	IgG
Clonality:	Polyclonal
Immunogen:	Recombinant fusion protein containing a sequence corresponding to amino acids 1-273 of human ERP27 (NP_689534.1).
Formulation:	Buffer: PBS with 0.02% sodium azide,50% glycerol,pH7.3.
Concentration:	lot specific
Purification:	Affinity purification
Conjugation:	Unconjugated
Storage:	Store at -20°C. Avoid freeze / thaw cycles.
Stability:	Shelf life: one year from despatch.
Predicted Protein Size:	30kDa
Gene Name:	endoplasmic reticulum protein 27
Database Link:	<a href="#">Q96DN0</a>
Background:	This gene encodes a noncatalytic member of the protein disulfide isomerase (PDI) family of endoplasmic reticulum (ER) proteins. The canonical protein has an N-terminal signal sequence, two thioredoxin (TRX)-like domains and a C-terminal ER-retention sequence. Alternative splicing results in multiple transcript variants encoding distinct isoforms; some of which lack domains present in the canonical protein.
Synonyms:	C12orf46; FLJ32115; PDIA8



[View online »](#)

## Product images:



Western blot analysis of extracts of various cell lines, using ERP27 antibody ([TA375984]) at 1000 dilution. | Secondary antibody: HRP Goat Anti-Rabbit IgG (H+L) at 1:10000 dilution. | Lysates/proteins: 25ug per lane. | Blocking buffer: 3% nonfat dry milk in TBST. | Detection: ECL Basic Kit . | Exposure time: 30s.