

## Product datasheet for **TA375974S**

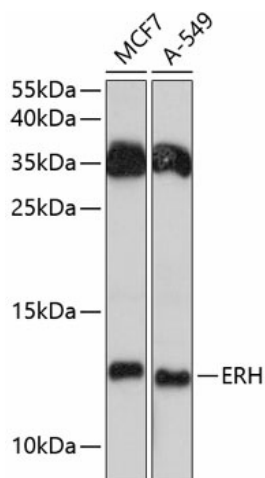
### ERH Rabbit Polyclonal Antibody

#### Product data:

Product Type:	Primary Antibodies
Applications:	ELISA, WB
Recommended Dilution:	WB, 1:500 - 1:2000 ELISA, Recommended starting concentration is 1 µg/mL. Please optimize the concentration based on your specific assay requirements.
Reactivity:	Human
Modifications:	Unmodified
Host:	Rabbit
Isotype:	IgG
Clonality:	Polyclonal
Formulation:	Buffer: PBS with 0.02% sodium azide, 50% glycerol, pH 7.3.
Concentration:	lot specific
Purification:	Affinity purification
Conjugation:	Unconjugated
Storage:	Store at -20°C. Avoid freeze / thaw cycles.
Stability:	Shelf life: one year from despatch.
Predicted Protein Size:	12kDa
Gene Name:	enhancer of rudimentary homolog (Drosophila)
Database Link:	<a href="#">Entrez Gene 2079 Human P84090</a>
Background:	Enables methyl-CpG binding activity. Predicted to be involved in pyrimidine nucleoside metabolic process. Located in midbody and nucleus. Part of methylosome.
Synonyms:	DROER; FLJ27340



[View online »](#)

**Product images:**


Western blot analysis of various lysates using ERH Rabbit pAb ([TA375974]) at 1:3000 dilution. Secondary antibody: HRP-conjugated Goat anti-Rabbit IgG (H+L) (AS014) at 1:10000 dilution. Lysates/proteins: 25µg per lane. Blocking buffer: 3% nonfat dry milk in TBST. Detection: ECL Basic Kit (RM00020). Exposure time: 90s.