

Product datasheet for **TA375967**

CSB (ERCC6) Rabbit Polyclonal Antibody

Product data:

Product Type:	Primary Antibodies
Applications:	IHC, WB
Recommended Dilution:	WB,1:500 - 1:2000 IHC,1:50 - 1:200
Reactivity:	Human, Mouse, Rat
Host:	Rabbit
Isotype:	IgG
Clonality:	Polyclonal
Immunogen:	Recombinant protein of human ERCC6.
Formulation:	Buffer: PBS with 0.02% sodium azide,50% glycerol,pH7.3.
Concentration:	lot specific
Purification:	Affinity purification
Conjugation:	Unconjugated
Storage:	Store at -20°C. Avoid freeze / thaw cycles.
Stability:	Shelf life: one year from despatch.
Predicted Protein Size:	168kDa
Gene Name:	ERCC excision repair 6, chromatin remodeling factor
Database Link:	Entrez Gene 2074 Human Q03468

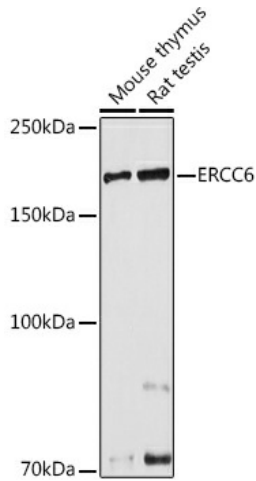
Background: This gene encodes a DNA-binding protein that is important in transcription-coupled excision repair. The encoded protein has ATP-stimulated ATPase activity, interacts with several transcription and excision repair proteins, and may promote complex formation at DNA repair sites. Mutations in this gene are associated with Cockayne syndrome type B and cerebrooculofacioskeletal syndrome 1. Alternative splicing occurs between a splice site from exon 5 of this gene to the 3' splice site upstream of the open reading frame (ORF) of the adjacent gene, piggyback-derived-3 (GeneID:267004), which activates the alternative polyadenylation site downstream of the piggyback-derived-3 ORF. The resulting transcripts encode a fusion protein that shares sequence with the product of each individual gene.



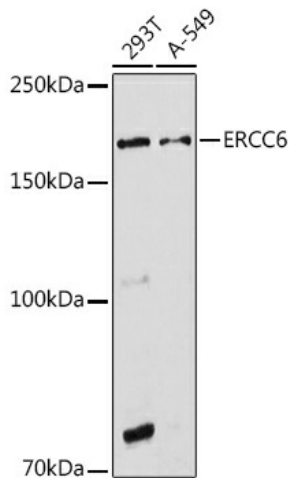
[View online »](#)

Synonyms: ARMD5; CKN2; COFS; COFS1; CSB; RAD26

Product images:



Western blot analysis of extracts of various cell lines, using ERCC6 antibody (TA375967) at 1:1000 dilution. | Secondary antibody: HRP Goat Anti-Rabbit IgG (H+L) at 1:10000 dilution. | Lysates/proteins: 25ug per lane. | Blocking buffer: 3% nonfat dry milk in TBST. | Detection: ECL Basic Kit . | Exposure time: 30s.



Western blot analysis of extracts of various cell lines, using ERCC6 antibody (TA375967) at 1:1000 dilution. | Secondary antibody: HRP Goat Anti-Rabbit IgG (H+L) at 1:10000 dilution. | Lysates/proteins: 25ug per lane. | Blocking buffer: 3% nonfat dry milk in TBST. | Detection: ECL Basic Kit . | Exposure time: 180s.