

Product datasheet for **TA375962S**

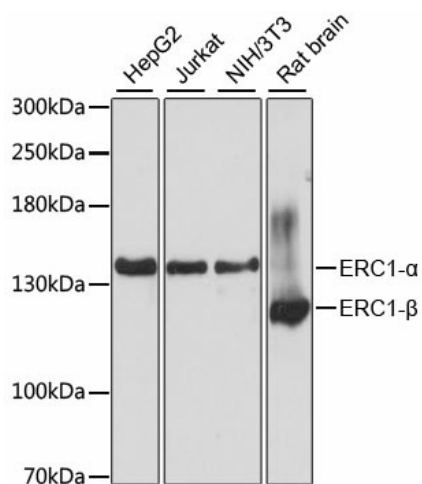
ERC1 Rabbit Polyclonal Antibody

Product data:

Product Type:	Primary Antibodies
Applications:	ELISA, WB
Recommended Dilution:	WB, 1:500 - 1:2000 ELISA, Recommended starting concentration is 1 µg/mL. Please optimize the concentration based on your specific assay requirements.
Reactivity:	Human, Mouse, Rat
Modifications:	Unmodified
Host:	Rabbit
Isotype:	IgG
Clonality:	Polyclonal
Formulation:	Buffer: PBS with 0.02% sodium azide, 50% glycerol, pH 7.3.
Concentration:	lot specific
Purification:	Affinity purification
Conjugation:	Unconjugated
Storage:	Store at -20°C. Avoid freeze / thaw cycles.
Stability:	Shelf life: one year from despatch.
Predicted Protein Size:	128kDa
Gene Name:	ELKS/RAB6-interacting/CAST family member 1
Database Link:	Entrez Gene 23085 Human Q8IUD2
Background:	The protein encoded by this gene is a member of a family of RIM-binding proteins. RIMs are active zone proteins that regulate neurotransmitter release. This gene has been found fused to the receptor-type tyrosine kinase gene RET by gene rearrangement due to the translocation t(10;12)(q11;p13) in thyroid papillary carcinoma. Alternative splicing results in multiple transcript variants.
Synonyms:	CAST2; ELKS; FLJ31750; KIAA1081; MGC12974; OTTHUMP00000160633; RAB6IP2



[View online »](#)

Product images:


Western blot analysis of various lysates using ERC1 Rabbit pAb (TA375962J) at 1:3000 dilution. Secondary antibody: HRP-conjugated Goat anti-Rabbit IgG (H+L) (AS014) at 1:10000 dilution. Lysates/proteins: 25µg per lane. Blocking buffer: 3% nonfat dry milk in TBST. Detection: ECL Basic Kit (RM00020). Exposure time: 15s.