

Product datasheet for **TA375960**

ErbB 4 (ERBB4) Rabbit Polyclonal Antibody

Product data:

| | |
|-------------------------|-------------------------------------------------------------------------------------------------------------------------|
| Product Type: | Primary Antibodies |
| Applications: | ICC/IF, IHC, WB |
| Recommended Dilution: | WB,1:500 - 1:1000 IHC,1:50 - 1:100 IF,1:50 - 1:100 |
| Reactivity: | Human, Mouse, Rat |
| Modifications: | Unmodified |
| Host: | Rabbit |
| Isotype: | IgG |
| Clonality: | Polyclonal |
| Immunogen: | Recombinant fusion protein containing a sequence corresponding to amino acids 26-160 of human ErbB4/HER4 (NP_005226.1). |
| Formulation: | Buffer: PBS with 0.02% sodium azide,50% glycerol,pH7.3. |
| Concentration: | lot specific |
| Purification: | Affinity purification |
| Conjugation: | Unconjugated |
| Storage: | Store at -20°C. Avoid freeze / thaw cycles. |
| Stability: | Shelf life: one year from despatch. |
| Predicted Protein Size: | 143kDa/145kDa/146kDa |
| Gene Name: | erb-b2 receptor tyrosine kinase 4 |
| Database Link: | Entrez Gene 2066 Human Q15303 |



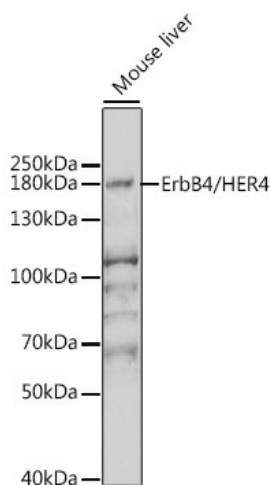
[View online »](#)

Background:

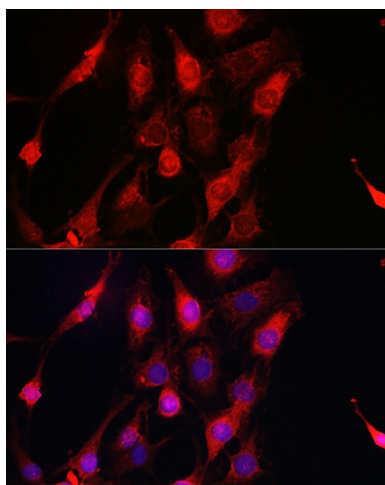
This gene is a member of the Tyr protein kinase family and the epidermal growth factor receptor subfamily. It encodes a single-pass type I membrane protein with multiple cysteine rich domains, a transmembrane domain, a tyrosine kinase domain, a phosphatidylinositol-3 kinase binding site and a PDZ domain binding motif. The protein binds to and is activated by neuregulins and other factors and induces a variety of cellular responses including mitogenesis and differentiation. Multiple proteolytic events allow for the release of a cytoplasmic fragment and an extracellular fragment. Mutations in this gene have been associated with cancer. Alternatively spliced variants which encode different protein isoforms have been described; however, not all variants have been fully characterized.

Synonyms:

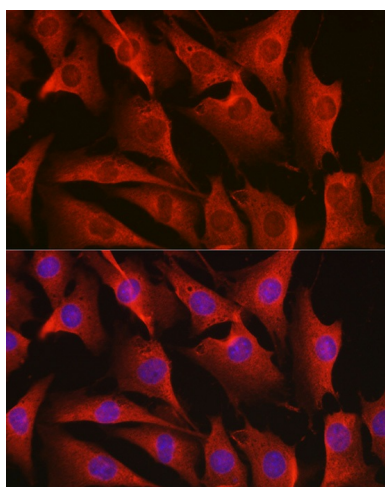
HER4; MGC138404; p180erbB4

Product images:

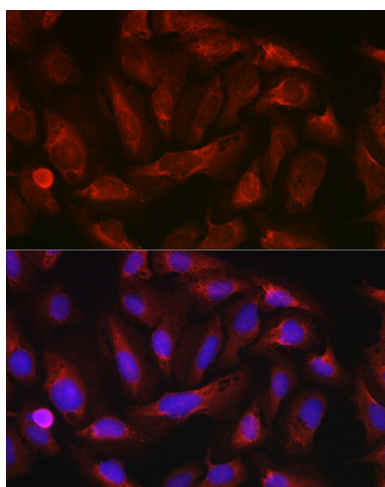
Western blot analysis of extracts of mouse brain, using ErbB4/HER4 antibody (TA375960) at 1:1000 dilution. | Secondary antibody: HRP Goat Anti-Rabbit IgG (H+L) at 1:10000 dilution. | Lysates/proteins: 25ug per lane. | Blocking buffer: 3% nonfat dry milk in TBST. | Detection: ECL Enhanced Kit. | Exposure time: 10s.



Immunofluorescence analysis of C6 cells using ErbB4/HER4 Rabbit pAb (TA375960) at dilution of 1:100 (40x lens). Blue: DAPI for nuclear staining.



Immunofluorescence analysis of NIH-3T3 cells using ErbB4/HER4 Rabbit pAb (TA375960) at dilution of 1:100 (40x lens). Blue: DAPI for nuclear staining.



Immunofluorescence analysis of U-2 OS cells using ErbB4/HER4 Rabbit pAb (TA375960) at dilution of 1:100 (40x lens). Blue: DAPI for nuclear staining.