

Product datasheet for **TA375948**

EPS15R (EPS15L1) Rabbit Polyclonal Antibody

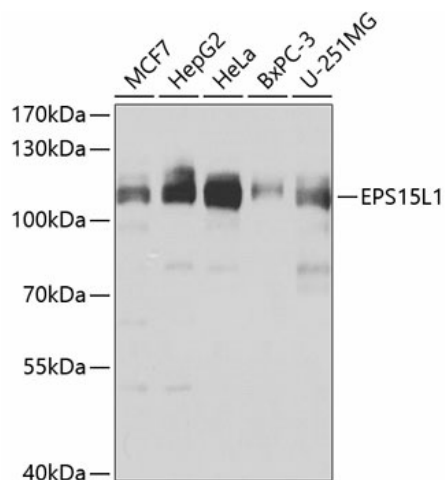
Product data:

Product Type:	Primary Antibodies
Applications:	WB
Recommended Dilution:	WB,1:500 - 1:2000
Reactivity:	Human
Modifications:	Unmodified
Host:	Rabbit
Isotype:	IgG
Clonality:	Polyclonal
Immunogen:	Recombinant fusion protein containing a sequence corresponding to amino acids 475-754 of human EPS15L1 (NP_001245304.1).
Formulation:	Buffer: PBS with 0.02% sodium azide,50% glycerol,pH7.3.
Concentration:	lot specific
Purification:	Affinity purification
Conjugation:	Unconjugated
Storage:	Store at -20°C. Avoid freeze / thaw cycles.
Stability:	Shelf life: one year from despatch.
Predicted Protein Size:	66kDa/83kDa/94kDa/99kDa
Gene Name:	epidermal growth factor receptor pathway substrate 15 like 1
Database Link:	Entrez Gene 58513 Human Q9UBC2
Background:	Seems to be a constitutive component of clathrin-coated pits that is required for receptor-mediated endocytosis. Involved in endocytosis of integrin beta-1 (ITGB1 and transferrin receptor (TFR; internalization of ITGB1 as DAB2-dependent cargo but not TFR seems to require association with DAB2.
Synonyms:	EPS15R



[View online »](#)

Product images:



Western blot analysis of extracts of various cell lines, using EPS15L1 antibody (TA375948) at 1:1000 dilution. | Secondary antibody: HRP Goat Anti-Rabbit IgG (H+L) at 1:10000 dilution. | Lysates/proteins: 25ug per lane. | Blocking buffer: 3% nonfat dry milk in TBST. | Detection: ECL Basic Kit . | Exposure time: 3s.