

Product datasheet for **TA375945S**

Epn2 Rabbit Polyclonal Antibody

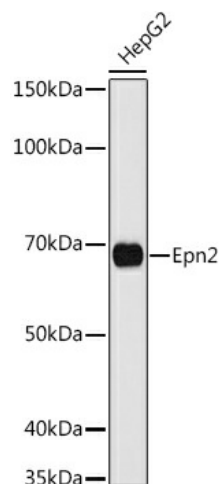
Product data:

Product Type:	Primary Antibodies
Applications:	ELISA, WB
Recommended Dilution:	WB, 1:500 - 1:1000 ELISA, Recommended starting concentration is 1 µg/mL. Please optimize the concentration based on your specific assay requirements.
Reactivity:	Human, Mouse, Rat
Modifications:	Unmodified
Host:	Rabbit
Isotype:	IgG
Clonality:	Polyclonal
Formulation:	Buffer: PBS with 0.02% sodium azide, 50% glycerol, pH 7.3.
Concentration:	lot specific
Purification:	Affinity purification
Conjugation:	Unconjugated
Storage:	Store at -20°C. Avoid freeze / thaw cycles.
Stability:	Shelf life: one year from despatch.
Predicted Protein Size:	68kDa
Gene Name:	epsin 2
Database Link:	Entrez Gene 13855 Mouse O95208
Background:	Predicted to enable clathrin binding activity and phospholipid binding activity. Acts upstream of or within Notch signaling pathway; embryonic organ development; and in utero embryonic development. Predicted to be located in intracellular membrane-bounded organelle. Predicted to be part of clathrin coat of endocytic vesicle. Predicted to be active in endosome and plasma membrane. Orthologous to human EPN2 (epsin 2).
Synonyms:	EHB21; KIAA1065; OTTHUMP00000065889



[View online »](#)

Product images:



Western blot analysis of lysates from HepG2 cells