

Product datasheet for TA375945

Epn2 Rabbit Polyclonal Antibody

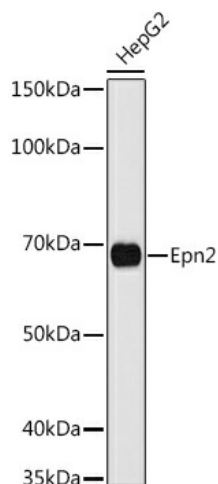
Product data:

Product Type:	Primary Antibodies
Applications:	WB
Recommended Dilution:	WB,1:500 - 1:2000
Reactivity:	Human, Mouse, Rat
Modifications:	Unmodified
Host:	Rabbit
Isotype:	IgG
Clonality:	Polyclonal
Immunogen:	A synthetic peptide corresponding to a sequence within amino acids 100-200 of mouse Epn2 (XP_006532226.1).
Formulation:	Buffer: PBS with 0.02% sodium azide,50% glycerol,pH7.3.
Concentration:	lot specific
Purification:	Affinity purification
Conjugation:	Unconjugated
Storage:	Store at -20°C. Avoid freeze / thaw cycles.
Stability:	Shelf life: one year from despatch.
Predicted Protein Size:	36kDa/57kDa/62kDa/68kDa
Gene Name:	epsin 2
Database Link:	Entrez Gene 13855 Mouse O95208
Background:	Plays a role in the formation of clathrin-coated invaginations and endocytosis.
Synonyms:	EHB21; KIAA1065; OTTHUMP00000065889



[View online »](#)

Product images:



Western blot analysis of extracts of HepG2 cells, using Epn2 antibody (TA375945) at 1:1000 dilution. | Secondary antibody: HRP Goat Anti-Rabbit IgG (H+L) at 1:10000 dilution. | Lysates/proteins: 25ug per lane. | Blocking buffer: 3% nonfat dry milk in TBST. | Detection: ECL Basic Kit . | Exposure time: 90s.