

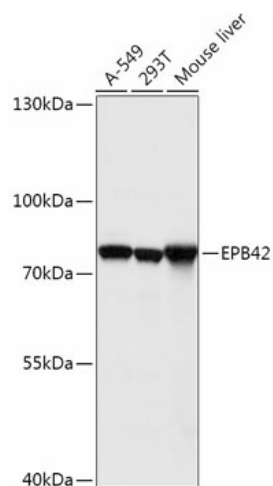
## Product datasheet for **TA375921S**

### EPB42 Rabbit Polyclonal Antibody

#### Product data:

Product Type:	Primary Antibodies
Applications:	ELISA, WB
Recommended Dilution:	WB, 1:500 - 1:1000 ELISA, Recommended starting concentration is 1 µg/mL. Please optimize the concentration based on your specific assay requirements.
Reactivity:	Human, Mouse
Modifications:	Unmodified
Host:	Rabbit
Isotype:	IgG
Clonality:	Polyclonal
Formulation:	PBS with 0.05% proclin300, 50% glycerol, pH7.3.
Concentration:	lot specific
Purification:	Affinity purification
Conjugation:	Unconjugated
Storage:	Store at -20°C. Avoid freeze / thaw cycles.
Stability:	Shelf life: one year from despatch.
Predicted Protein Size:	77kDa
Gene Name:	erythrocyte membrane protein band 4.2
Database Link:	<a href="#">Entrez Gene 2038 Human P16452</a>
Background:	Erythrocyte membrane protein band 4.2 is an ATP-binding protein which may regulate the association of protein 3 with ankyrin. It probably has a role in erythrocyte shape and mechanical property regulation. Mutations in the EPB42 gene are associated with recessive spherocytic elliptocytosis and recessively transmitted hereditary hemolytic anemia. Alternatively spliced transcript variants encoding different isoforms have been found for this gene.
Synonyms:	E42P; MGC116735; MGC116737; P4.2; PA; SPH5


[View online »](#)

**Product images:**

Western blot analysis of various lysates