

Product datasheet for **TA375920S**

EPB41L3 Rabbit Polyclonal Antibody

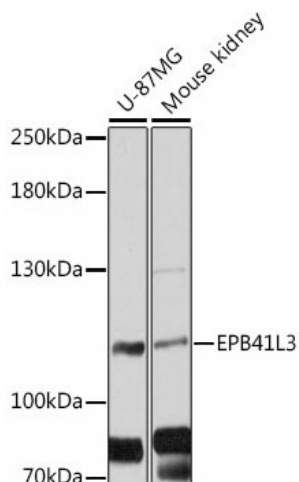
Product data:

Product Type:	Primary Antibodies
Applications:	ELISA, WB
Recommended Dilution:	WB, 1:500 - 1:2000 ELISA, Recommended starting concentration is 1 µg/mL. Please optimize the concentration based on your specific assay requirements.
Reactivity:	Human, Mouse
Modifications:	Unmodified
Host:	Rabbit
Isotype:	IgG
Clonality:	Polyclonal
Formulation:	Buffer: PBS with 0.02% sodium azide, 50% glycerol, pH 7.3.
Concentration:	lot specific
Purification:	Affinity purification
Conjugation:	Unconjugated
Storage:	Store at -20°C. Avoid freeze / thaw cycles.
Stability:	Shelf life: one year from despatch.
Predicted Protein Size:	121kDa
Gene Name:	erythrocyte membrane protein band 4.1 like 3
Database Link:	Entrez Gene 23136 Human Q9Y2J2
Background:	Predicted to enable cytoskeletal protein-membrane anchor activity. Predicted to be a structural constituent of cytoskeleton. Predicted to be involved in several processes, including nervous system development; paranodal junction maintenance; and protein localization to paranode region of axon. Located in cell-cell junction and plasma membrane. Biomarker of meningioma.
Synonyms:	4.1B; DAL-1; DAL1; FLJ37633; KIAA0987



[View online »](#)

Product images:



Western blot analysis of various lysates using EPB41L3 Rabbit pAb ([TA375920]) at 1:3000 dilution.

Secondary antibody: HRP-conjugated Goat anti-Rabbit IgG (H+L) (AS014) at 1:10000 dilution.

Lysates/proteins: 25µg per lane.

Blocking buffer: 3% nonfat dry milk in TBST.

Detection: ECL Basic Kit (RM00020).

Exposure time: 30s.