

Product datasheet for **TA375919S**

EPB4IL2 (EPB41L2) Rabbit Polyclonal Antibody

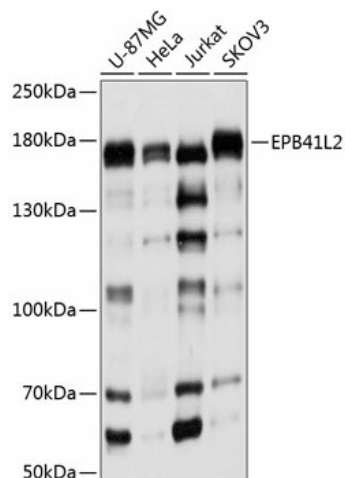
Product data:

Product Type:	Primary Antibodies
Applications:	ELISA, ICC/IF, WB
Recommended Dilution:	WB, 1:200 - 1:2000 IF/ICC, 1:50 - 1:200 ELISA, Recommended starting concentration is 1 µg/mL. Please optimize the concentration based on your specific assay requirements.
Reactivity:	Human
Modifications:	Unmodified
Host:	Rabbit
Isotype:	IgG
Clonality:	Polyclonal
Formulation:	Buffer: PBS with 0.02% sodium azide, 50% glycerol, pH 7.3.
Concentration:	lot specific
Purification:	Affinity purification
Conjugation:	Unconjugated
Storage:	Store at -20°C. Avoid freeze / thaw cycles.
Stability:	Shelf life: one year from despatch.
Predicted Protein Size:	113kDa
Gene Name:	erythrocyte membrane protein band 4.1 like 2
Database Link:	Entrez Gene 2037 Human O43491
Background:	Predicted to enable PH domain binding activity; cytoskeletal protein binding activity; and structural molecule activity. Involved in positive regulation of protein localization to cell cortex. Located in cell junction; nucleoplasm; and plasma membrane. Colocalizes with COP9 signalosome.
Synonyms:	4.1-G; 4.1G; DKFZp781D1972; DKFZp781H1755; OTTHUMP00000017197



[View online »](#)

Product images:



Western blot analysis of various lysates using EPB41L2 Rabbit pAb ([TA375919]) at 1:1000 dilution.

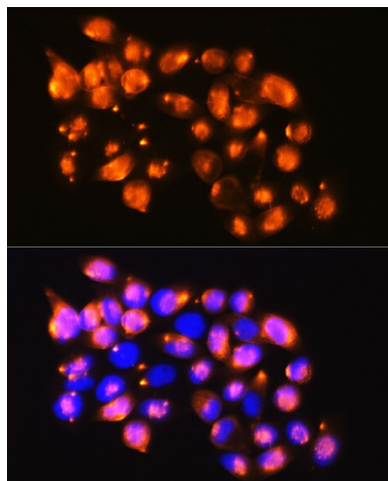
Secondary antibody: HRP-conjugated Goat anti-Rabbit IgG (H+L) (AS014) at 1:10000 dilution.

Lysates/proteins: 25µg per lane.

Blocking buffer: 3% nonfat dry milk in TBST.

Detection: ECL Basic Kit (RM00020).

Exposure time: 5s.



Immunofluorescence analysis of HeLa cells using EPB41L2 Rabbit pAb ([TA375919]) at dilution of 1:100. Blue: DAPI for nuclear staining.