

## Product datasheet for **TA375919**

### EPB4IL2 (EPB41L2) Rabbit Polyclonal Antibody

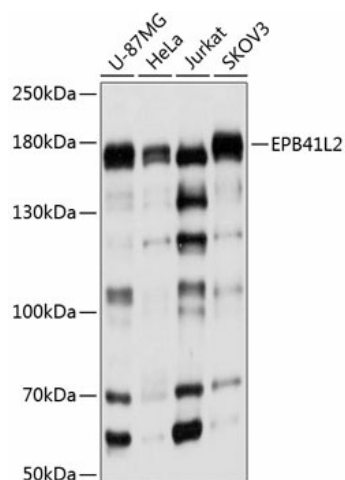
#### Product data:

Product Type:	Primary Antibodies
Applications:	ICC/IF, WB
Recommended Dilution:	WB, 1:200 - 1:2000 IF, 1:50 - 1:200
Reactivity:	Human
Modifications:	Unmodified
Host:	Rabbit
Isotype:	IgG
Clonality:	Polyclonal
Immunogen:	Recombinant fusion protein containing a sequence corresponding to amino acids 1-210 of human EPB41L2 (NP_001186317.1).
Formulation:	Buffer: PBS with 0.02% sodium azide, 50% glycerol, pH 7.3.
Concentration:	lot specific
Purification:	Affinity purification
Conjugation:	Unconjugated
Storage:	Store at -20°C. Avoid freeze / thaw cycles.
Stability:	Shelf life: one year from despatch.
Predicted Protein Size:	76kDa/83kDa/95kDa/112kDa
Gene Name:	erythrocyte membrane protein band 4.1 like 2
Database Link:	<a href="#">Entrez Gene 2037 Human O43491</a>
Background:	Required for dynein-dynactin complex and NUMA1 recruitment at the mitotic cell cortex during anaphase.
Synonyms:	4.1-G; 4.1G; DKFZp781D1972; DKFZp781H1755; OTTHUMP00000017197

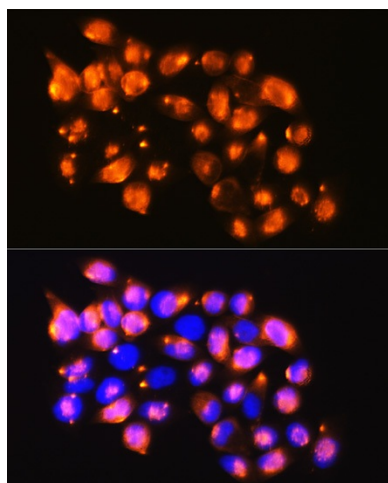


[View online »](#)

## Product images:



Western blot analysis of extracts of various cell lines, using EPB41L2 antibody (TA375919) at 1:1000 dilution. | Secondary antibody: HRP Goat Anti-Rabbit IgG (H+L) at 1:10000 dilution. | Lysates/proteins: 25ug per lane. | Blocking buffer: 3% nonfat dry milk in TBST. | Detection: ECL Basic Kit. | Exposure time: 5s.



Immunofluorescence analysis of HeLa cells using EPB41L2 antibody (TA375919) at dilution of 1:100. Blue: DAPI for nuclear staining.