

## Product datasheet for **TA375909**

### CD39 (ENTPD1) Rabbit Polyclonal Antibody

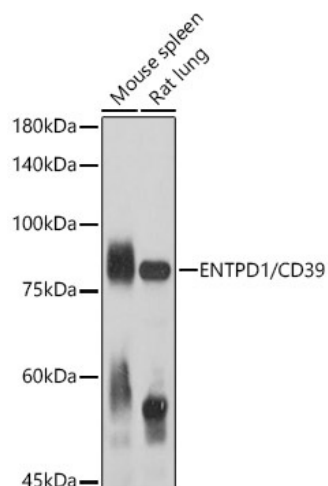
#### Product data:

Product Type:	Primary Antibodies
Applications:	ICC/IF, IHC, WB
Recommended Dilution:	WB,1:200 - 1:1000 IHC,1:50 - 1:200 IF,1:50 - 1:200
Reactivity:	Human, Mouse, Rat
Modifications:	Unmodified
Host:	Rabbit
Isotype:	IgG
Clonality:	Polyclonal
Immunogen:	Recombinant fusion protein containing a sequence corresponding to amino acids 1-180 of human ENTPD1/CD39 (NP_001157655.1).
Formulation:	Buffer: PBS with 0.02% sodium azide,50% glycerol,pH7.3.
Concentration:	lot specific
Purification:	Affinity purification
Conjugation:	Unconjugated
Storage:	Store at -20°C. Avoid freeze / thaw cycles.
Stability:	Shelf life: one year from despatch.
Predicted Protein Size:	34kDa/42kDa/46kDa/57kDa/58kDa/59kDa
Gene Name:	ectonucleoside triphosphate diphosphohydrolase 1
Database Link:	<a href="#">Entrez Gene 953 Human P49961</a>
Background:	The protein encoded by this gene is a plasma membrane protein that hydrolyzes extracellular ATP and ADP to AMP. Inhibition of this protein's activity may confer anticancer benefits. Several transcript variants encoding different isoforms have been found for this gene.
Synonyms:	ATPDase; CD39; DKFZp686D194; DKFZp686I093; ecto-apyrase; FLJ40921; FLJ40959; NTPDase-1

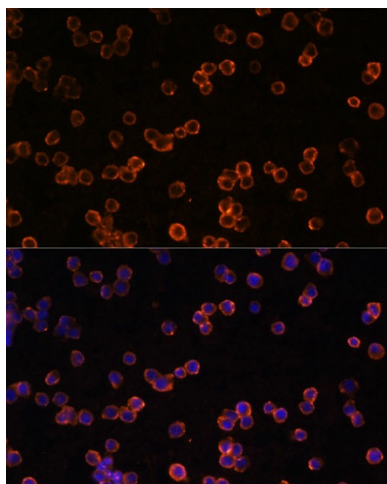


[View online »](#)

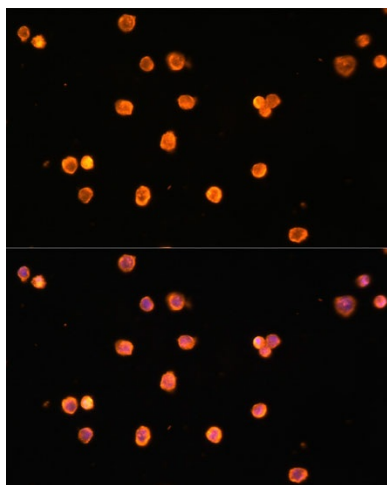
## Product images:



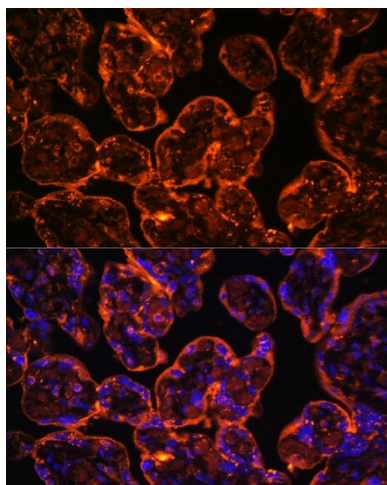
Western blot analysis of extracts of various cell lines, using ENTPD1/CD39 antibody (TA375909) at 1:1000 dilution. | Secondary antibody: HRP Goat Anti-Rabbit IgG (H+L) at 1:10000 dilution. | Lysates/proteins: 25ug per lane. | Blocking buffer: 3% nonfat dry milk in TBST. | Detection: ECL Basic Kit . | Exposure time: 180s.



Immunofluorescence analysis of Raw264.7 cells using ENTPD1/CD39 Polyclonal Antibody (TA375909) at dilution of 1:100 (40x lens). Blue: DAPI for nuclear staining.



Immunofluorescence analysis of THP-1 cells using ENTPD1/CD39 Polyclonal Antibody (TA375909) at dilution of 1:100 (40x lens). Blue: DAPI for nuclear staining.



Immunofluorescence analysis of human placenta using ENTPD1/CD39 Polyclonal Antibody (TA375909) at dilution of 1:100 (40x lens). Blue: DAPI for nuclear staining.