

## Product datasheet for **TA375907**

### ENPP6 Rabbit Polyclonal Antibody

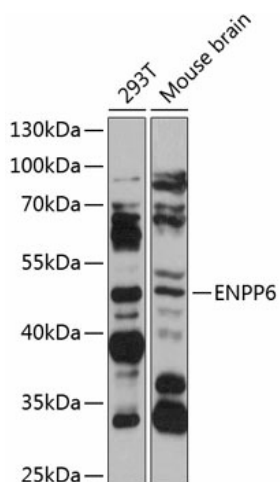
#### Product data:

Product Type:	Primary Antibodies
Applications:	WB
Recommended Dilution:	WB,1:500 - 1:2000
Reactivity:	Human, Mouse
Modifications:	Unmodified
Host:	Rabbit
Isotype:	IgG
Clonality:	Polyclonal
Immunogen:	Recombinant fusion protein containing a sequence corresponding to amino acids 91-440 of human ENPP6 (NP_699174.1).
Formulation:	Buffer: PBS with 0.02% sodium azide,50% glycerol,pH7.3.
Concentration:	lot specific
Purification:	Affinity purification
Conjugation:	Unconjugated
Storage:	Store at -20°C. Avoid freeze / thaw cycles.
Stability:	Shelf life: one year from despatch.
Predicted Protein Size:	50kDa
Gene Name:	ectonucleotide pyrophosphatase/phosphodiesterase 6
Database Link:	<a href="#">Entrez Gene 133121 Human Q6UWR7</a>
Background:	Choline-specific glycerophosphodiesterase that hydrolyzes glycerophosphocholine (GPC and lysophosphatidylcholine (LPC and contributes to supplying choline to the cells. Has a preference for LPC with short (12:0 and 14:0 or polyunsaturated (18:2 and 20:4 fatty acids. In vitro, hydrolyzes only choline-containing lysophospholipids, such as sphingosylphosphorylcholine (SPC, platelet-activating factor (PAF and lysoPAF, but not other lysophospholipids (By similarity.
Synonyms:	B830047L21Rik; E-NPP6; MGC33971; NPP-6; NPP6



[View online »](#)

## Product images:



Western blot analysis of extracts of various cell lines, using ENPP6 antibody (TA375907) at 1:1000 dilution. | Secondary antibody: HRP Goat Anti-Rabbit IgG (H+L) at 1:10000 dilution. | Lysates/proteins: 25ug per lane. | Blocking buffer: 3% nonfat dry milk in TBST. | Detection: ECL Basic Kit . | Exposure time: 30s.