

## Product datasheet for **TA375897**

### NSE (ENO2) Rabbit Polyclonal Antibody

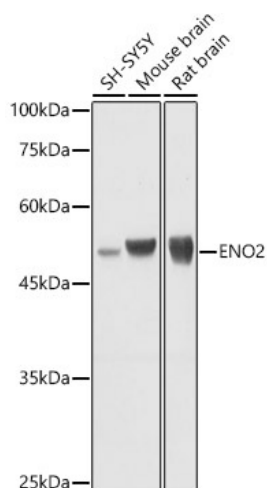
#### Product data:

Product Type:	Primary Antibodies
Applications:	ICC/IF, IP, WB
Recommended Dilution:	WB,1:500 - 1:2000 IF,1:50 - 1:200
Reactivity:	Human, Mouse, Rat
Modifications:	Unmodified
Host:	Rabbit
Isotype:	IgG
Clonality:	Polyclonal
Immunogen:	Recombinant fusion protein containing a sequence corresponding to amino acids 195-434 of human ENO2 (NP_001966.1).
Formulation:	Buffer: PBS with 0.02% sodium azide,50% glycerol,pH7.3.
Concentration:	lot specific
Purification:	Affinity purification
Conjugation:	Unconjugated
Storage:	Store at -20°C. Avoid freeze / thaw cycles.
Stability:	Shelf life: one year from despatch.
Predicted Protein Size:	42kDa/47kDa
Gene Name:	enolase 2
Database Link:	<a href="#">Entrez Gene 2026 Human P09104</a>
Background:	This gene encodes one of the three enolase isoenzymes found in mammals. This isoenzyme, a homodimer, is found in mature neurons and cells of neuronal origin. A switch from alpha enolase to gamma enolase occurs in neural tissue during development in rats and primates.
Synonyms:	NSE

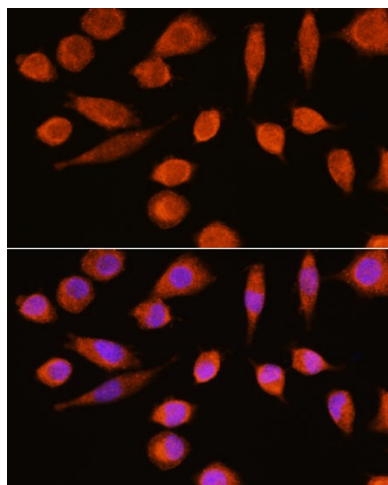


[View online »](#)

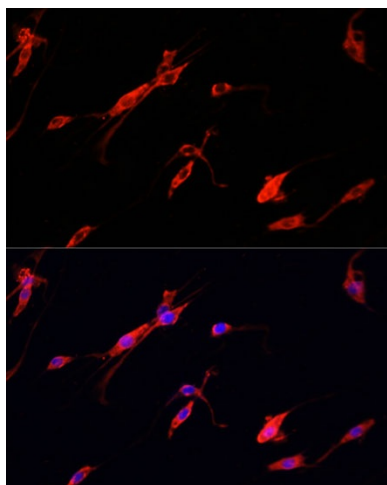
## Product images:



Western blot analysis of extracts of various cell lines, using ENO2 antibody (TA375897) at 1:500 dilution. | Secondary antibody: HRP Goat Anti-Rabbit IgG (H+L) at 1:10000 dilution. | Lysates/proteins: 25ug per lane. | Blocking buffer: 3% nonfat dry milk in TBST. | Detection: ECL Basic Kit. | Exposure time: 1s.



Immunofluorescence analysis of L929 cells using ENO2 antibody (TA375897) at dilution of 1:100. Blue: DAPI for nuclear staining.



Immunofluorescence analysis of PC-12 cells using ENO2 antibody (TA375897) at dilution of 1:100. Blue: DAPI for nuclear staining.