

## Product datasheet for **TA375893**

### ENC1 Rabbit Polyclonal Antibody

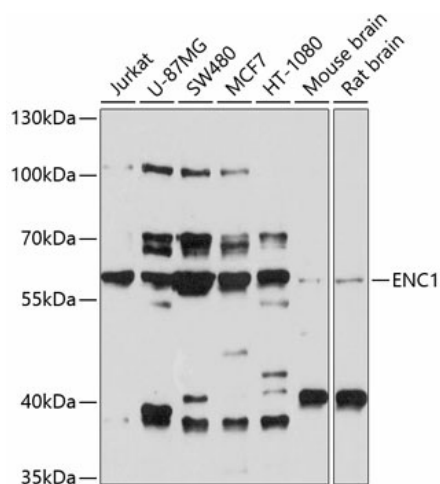
#### Product data:

Product Type:	Primary Antibodies
Applications:	WB
Recommended Dilution:	WB,1:1000 - 1:2000
Reactivity:	Human, Mouse, Rat
Modifications:	Unmodified
Host:	Rabbit
Isotype:	IgG
Clonality:	Polyclonal
Immunogen:	Recombinant fusion protein containing a sequence corresponding to amino acids 1-270 of human ENC1 (NP_003624.1).
Formulation:	Buffer: PBS with 0.02% sodium azide,50% glycerol,pH7.3.
Concentration:	lot specific
Purification:	Affinity purification
Conjugation:	Unconjugated
Storage:	Store at -20°C. Avoid freeze / thaw cycles.
Stability:	Shelf life: one year from despatch.
Predicted Protein Size:	57kDa/66kDa
Gene Name:	ectodermal-neural cortex 1
Database Link:	<a href="#">Entrez Gene 8507 Human O14682</a>
Background:	This gene encodes a member of the kelch-related family of actin-binding proteins. The encoded protein plays a role in the oxidative stress response as a regulator of the transcription factor Nrf2, and expression of this gene may play a role in malignant transformation. Alternatively spliced transcript variants encoding multiple isoforms have been observed for this gene.
Synonyms:	CCL28; ENC-1; FLJ39259; KLHL35; KLHL37; NRPB; PIG10; TP53I10



[View online »](#)

## Product images:



Western blot analysis of extracts of various cell lines, using ENC1 antibody (TA375893) at 1:1000 dilution. | Secondary antibody: HRP Goat Anti-Rabbit IgG (H+L) at 1:10000 dilution. | Lysates/proteins: 25ug per lane. | Blocking buffer: 3% nonfat dry milk in TBST. | Detection: ECL Basic Kit . | Exposure time: 40s.