

## Product datasheet for **TA375887S**

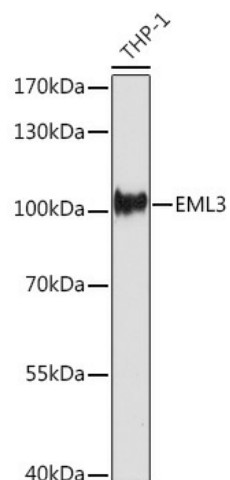
### EML3 Rabbit Polyclonal Antibody

#### Product data:

Product Type:	Primary Antibodies
Applications:	ELISA, WB
Recommended Dilution:	WB, 1:500 - 1:2000 ELISA, Recommended starting concentration is 1 µg/mL. Please optimize the concentration based on your specific assay requirements.
Reactivity:	Human
Modifications:	Unmodified
Host:	Rabbit
Isotype:	IgG
Clonality:	Polyclonal
Formulation:	Buffer: PBS with 0.02% sodium azide, 50% glycerol, pH 7.3.
Concentration:	lot specific
Purification:	Affinity purification
Conjugation:	Unconjugated
Storage:	Store at -20°C. Avoid freeze / thaw cycles.
Stability:	Shelf life: one year from despatch.
Predicted Protein Size:	95kDa
Gene Name:	echinoderm microtubule associated protein like 3
Database Link:	<a href="#">Entrez Gene 256364 Human Q32P44</a>
Background:	Predicted to enable microtubule binding activity. Involved in mitotic metaphase plate congression and regulation of mitotic spindle assembly. Located in several cellular components, including midbody; mitotic spindle microtubule; and nucleus.
Synonyms:	ELP95; EMAP-3; FLJ35827; MGC111422

[View online »](#)

## Product images:



Western blot analysis of lysates from THP-1 cells