

## Product datasheet for **TA375885**

### EML2 Rabbit Polyclonal Antibody

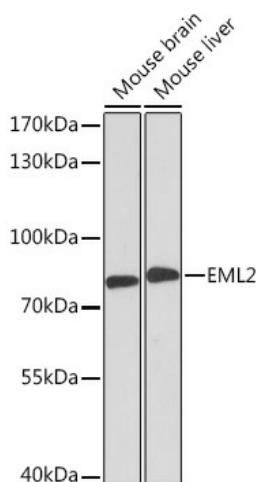
#### Product data:

Product Type:	Primary Antibodies
Applications:	WB
Recommended Dilution:	WB,1:500 - 1:2000
Reactivity:	Mouse
Modifications:	Unmodified
Host:	Rabbit
Isotype:	IgG
Clonality:	Polyclonal
Immunogen:	Recombinant fusion protein containing a sequence corresponding to amino acids 150-415 of human EML2 (NP_036287.1).
Formulation:	Buffer: PBS with 0.02% sodium azide,50% glycerol,pH7.3.
Concentration:	lot specific
Purification:	Affinity purification
Conjugation:	Unconjugated
Storage:	Store at -20°C. Avoid freeze / thaw cycles.
Stability:	Shelf life: one year from despatch.
Predicted Protein Size:	70kDa/86kDa/92kDa
Gene Name:	echinoderm microtubule associated protein like 2
Database Link:	<a href="#">O95834</a>
Background:	Tubulin binding protein that inhibits microtubule nucleation and growth, resulting in shorter microtubules.
Synonyms:	ELP70; EMAP-2; EMAP2; EMAPL2; HuEMAP-2



[View online »](#)

## Product images:



Western blot analysis of extracts of various cell lines, using EML2 Rabbit pAb (TA375885) at 1:3000 dilution. | Secondary antibody: HRP Goat Anti-Rabbit IgG (H+L) at 1:10000 dilution. | Lysates/proteins: 25ug per lane. | Blocking buffer: 3% nonfat dry milk in TBST. | Detection: ECL Basic Kit . | Exposure time: 90s.