

Product datasheet for **TA375883S**

EMG1 Rabbit Polyclonal Antibody

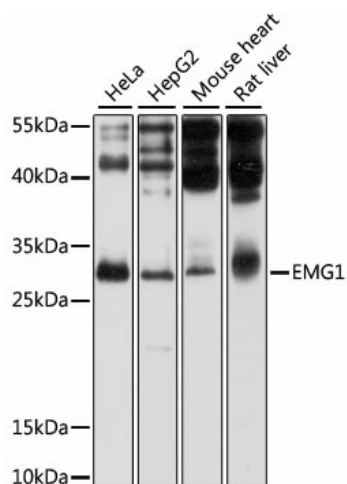
Product data:

Product Type:	Primary Antibodies
Applications:	WB
Recommended Dilution:	WB,1:500 - 1:2000
Reactivity:	Human, Mouse, Rat
Modifications:	Unmodified
Host:	Rabbit
Isotype:	IgG
Clonality:	Polyclonal
Immunogen:	Recombinant fusion protein containing a sequence corresponding to amino acids 1-244 of human EMG1 (NP_006322.4).
Formulation:	Buffer: PBS with 0.02% sodium azide,50% glycerol,pH7.3.
Concentration:	lot specific
Purification:	Affinity purification
Conjugation:	Unconjugated
Storage:	Store at -20°C. Avoid freeze / thaw cycles.
Stability:	Shelf life: one year from despatch.
Predicted Protein Size:	26kDa
Gene Name:	EMG1, N1-specific pseudouridine methyltransferase
Database Link:	Entrez Gene 10436 Human Q92979
Background:	This gene encodes an essential, conserved eukaryotic protein that methylates pseudouridine in 18S rRNA. The related protein in yeast is a component of the small subunit processome and is essential for biogenesis of the ribosomal 40S subunit. A mutation in this gene has been associated with Bowen-Conradi syndrome. Alternative splicing results in multiple transcript variants.
Synonyms:	BWCNS; C2F; FLJ60792; Grcc2f; NEP1



[View online »](#)

Product images:



Western blot analysis of extracts of various cell lines, using EMG1 antibody ([TA375883]) at 1:1000 dilution. | Secondary antibody: HRP Goat Anti-Rabbit IgG (H+L) at 1:10000 dilution. | Lysates/proteins: 25ug per lane. | Blocking buffer: 3% nonfat dry milk in TBST. | Detection: ECL Basic Kit . | Exposure time: 1s.