

Product datasheet for **TA375880S**

Emerin (EMD) Rabbit Polyclonal Antibody

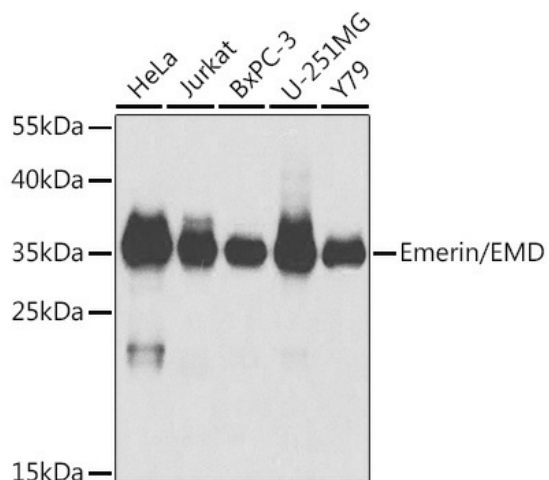
Product data:

Product Type:	Primary Antibodies
Applications:	ICC/IF, IHC, WB
Recommended Dilution:	WB,1:500 - 1:2000 IHC,1:50 - 1:200 IF,1:50 - 1:200
Reactivity:	Human, Mouse
Modifications:	Unmodified
Host:	Rabbit
Isotype:	IgG
Clonality:	Polyclonal
Immunogen:	Recombinant fusion protein containing a sequence corresponding to amino acids 1-220 of human Emerin/Emerin/EMD (NP_000108.1).
Formulation:	Buffer: PBS with 0.02% sodium azide,50% glycerol,pH7.3.
Concentration:	lot specific
Purification:	Affinity purification
Conjugation:	Unconjugated
Storage:	Store at -20°C. Avoid freeze / thaw cycles.
Stability:	Shelf life: one year from despatch.
Predicted Protein Size:	28kDa
Gene Name:	emerin
Database Link:	Entrez Gene 2010 Human P50402
Background:	Emerin is a serine-rich nuclear membrane protein and a member of the nuclear lamina-associated protein family. It mediates membrane anchorage to the cytoskeleton. Dreifuss-Emermy muscular dystrophy is an X-linked inherited degenerative myopathy resulting from mutation in the emerin gene.
Synonyms:	EDMD; emerin; LEMD5; STA

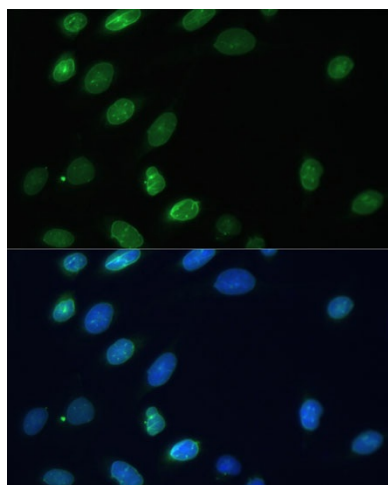


[View online »](#)

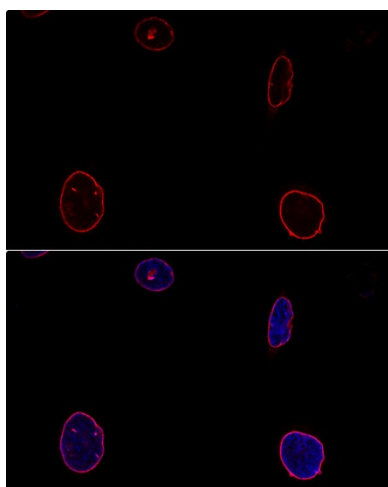
Product images:



Western blot analysis of extracts of various cell lines, using Emerin/Emerin/EMD antibody ([TA375880]) at 1:1000 dilution. | Secondary antibody: HRP Goat Anti-Rabbit IgG (H+L) at 1:10000 dilution. | Lysates/proteins: 25ug per lane. | Blocking buffer: 3% nonfat dry milk in TBST.



Immunofluorescence analysis of U-2 OS cells using Emerin/Emerin/EMD antibody ([TA375880]) at dilution of 1:100. Blue: DAPI for nuclear staining.



Confocal immunofluorescence analysis of U-2OS cells using Emerin/Emerin/EMD antibody ([TA375880]) at dilution of 1:100. Blue: DAPI for nuclear staining.