

## Product datasheet for TA375871S

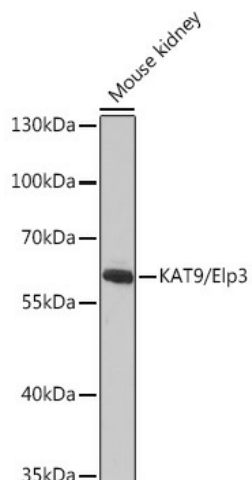
### ELP3 Rabbit Polyclonal Antibody

#### Product data:

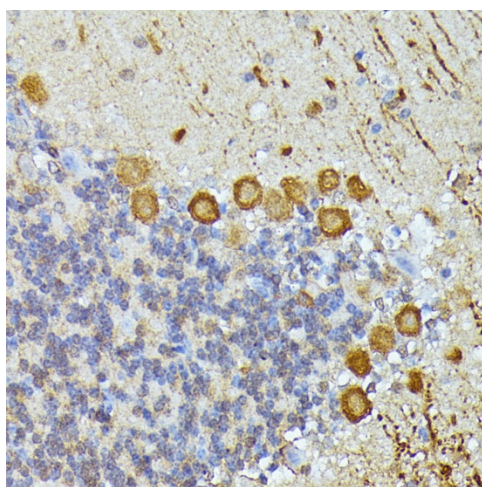
Product Type:	Primary Antibodies
Applications:	ELISA, IHC, WB
Recommended Dilution:	WB, 1:500 - 1:2000 IHC-P, 1:50 - 1:200 ELISA, Recommended starting concentration is 1 µg/mL. Please optimize the concentration based on your specific assay requirements.
Reactivity:	Human, Mouse, Rat
Modifications:	Unmodified
Host:	Rabbit
Isotype:	IgG
Clonality:	Polyclonal
Formulation:	PBS with 0.09% Sodium azide, 50% glycerol, pH 7.3.
Concentration:	lot specific
Purification:	Affinity purification
Conjugation:	Unconjugated
Storage:	Store at -20°C. Avoid freeze / thaw cycles.
Stability:	Shelf life: one year from despatch.
Predicted Protein Size:	62kDa
Gene Name:	elongator acetyltransferase complex subunit 3
Database Link:	<a href="#">Entrez Gene 55140 Human Q9H9T3</a>
Background:	Enables acetyltransferase activity and phosphorylase kinase regulator activity. Involved in regulation of transcription by RNA polymerase II and tRNA wobble uridine modification. Located in cytosol and nucleolus. Part of elongator holoenzyme complex.
Synonyms:	FLJ10422; hELP3; KAT9


[View online »](#)

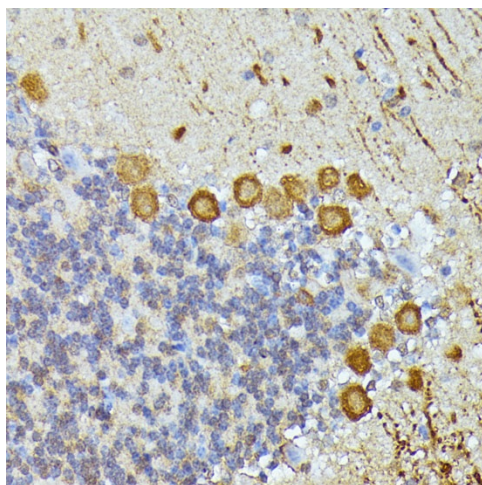
## Product images:



Western blot analysis of lysates from Mouse kidney



Immunohistochemistry analysis of paraffin-embedded Rat cerebellum using KAT9/Elp3 Rabbit pAb ([TA375871]) at dilution of 1:100 (40x lens). Microwave antigen retrieval performed with 0.01M PBS Buffer (pH 7.2) prior to IHC staining.



Immunohistochemistry analysis of paraffin-embedded Mouse cerebellum using KAT9/Elp3 Rabbit pAb ([TA375871]) at dilution of 1:100 (40x lens). Microwave antigen retrieval performed with 0.01M PBS Buffer (pH 7.2) prior to IHC staining.