

Product datasheet for **TA375866S**

RBED1 (ELMOD3) Rabbit Polyclonal Antibody

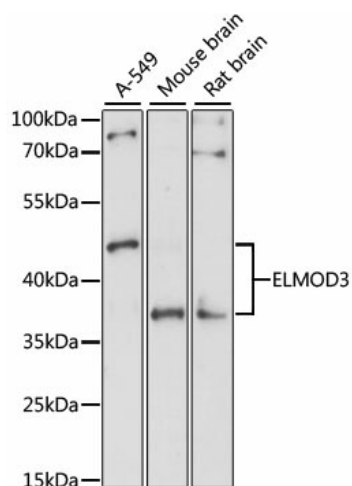
Product data:

Product Type:	Primary Antibodies
Applications:	ELISA, WB
Recommended Dilution:	WB, 1:500 - 1:2000 ELISA, Recommended starting concentration is 1 µg/mL. Please optimize the concentration based on your specific assay requirements.
Reactivity:	Human, Mouse, Rat
Modifications:	Unmodified
Host:	Rabbit
Isotype:	IgG
Clonality:	Polyclonal
Formulation:	Buffer: PBS with 0.02% sodium azide, 50% glycerol, pH 7.3.
Concentration:	lot specific
Purification:	Affinity purification
Conjugation:	Unconjugated
Storage:	Store at -20°C. Avoid freeze / thaw cycles.
Stability:	Shelf life: one year from despatch.
Predicted Protein Size:	43kDa
Gene Name:	ELMO domain containing 3
Database Link:	Entrez Gene 84173 Human Q96FG2
Background:	This gene encodes a member of the engulfment and cell motility family of GTPase-activating proteins that regulate Arf GTPase proteins. Members of this family are defined by a conserved engulfment and cell motility domain. In rat cochlea, the encoded protein is found in stereocilia, kinocilia and cuticular plate of developing hair cells suggesting a function for this protein in cochlear sensory cells. An allelic variant of this family has been associated with autosomal recessive nonsyndromic deafness-88 in humans. Alternative splicing results in multiple transcript variants.
Synonyms:	C330008I15Rik; FLJ21977; FLJ35601; LST3; MGC111036; RBED1; RBM29



[View online »](#)

Product images:



Western blot analysis of various lysates using ELMOD3 Rabbit pAb (TA375866) at 1:1000 dilution.

Secondary antibody: HRP-conjugated Goat anti-Rabbit IgG (H+L) (AS014) at 1:10000 dilution.

Lysates/proteins: 25µg per lane.

Blocking buffer: 3% nonfat dry milk in TBST.

Detection: ECL Basic Kit (RM00020).

Exposure time: 90s.