

Product datasheet for **TA375866**

RBED1 (ELMOD3) Rabbit Polyclonal Antibody

Product data:

Product Type:	Primary Antibodies
Applications:	WB
Recommended Dilution:	WB,1:500 - 1:2000
Reactivity:	Human, Mouse, Rat
Modifications:	Unmodified
Host:	Rabbit
Isotype:	IgG
Clonality:	Polyclonal
Immunogen:	Recombinant fusion protein containing a sequence corresponding to amino acids 290-381 of human ELMOD3 (NP_001128493.1).
Formulation:	Buffer: PBS with 0.02% sodium azide,50% glycerol,pH7.3.
Concentration:	lot specific
Purification:	Affinity purification
Conjugation:	Unconjugated
Storage:	Store at -20°C. Avoid freeze / thaw cycles.
Stability:	Shelf life: one year from despatch.
Predicted Protein Size:	18kDa/20kDa/28kDa/43kDa/44kDa
Gene Name:	ELMO domain containing 3
Database Link:	Entrez Gene 84173 Human Q96FG2

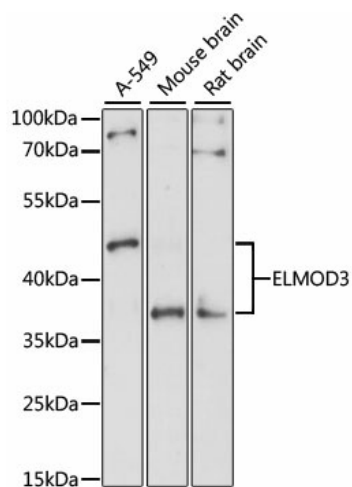
Background: This gene encodes a member of the engulfment and cell motility family of GTPase-activating proteins that regulate Arf GTPase proteins. Members of this family are defined by a conserved engulfment and cell motility domain. In rat cochlea, the encoded protein is found in stereocilia, kinocilia and cuticular plate of developing hair cells suggesting a function for this protein in cochlear sensory cells. An allelic variant of this family has been associated with autosomal recessive nonsyndromic deafness-88 in humans. Alternative splicing results in multiple transcript variants.



[View online »](#)

Synonyms: C33000815Rik; FLJ21977; FLJ35601; LST3; MGC111036; RBED1; RBM29

Product images:



Western blot analysis of extracts of various cell lines, using ELMOD3 antibody (TA375866) at 1:1000 dilution. | Secondary antibody: HRP Goat Anti-Rabbit IgG (H+L) at 1:10000 dilution. | Lysates/proteins: 25ug per lane. | Blocking buffer: 3% nonfat dry milk in TBST. | Detection: ECL Basic Kit . | Exposure time: 90s.