

## Product datasheet for **TA375857**

### ELL Rabbit Polyclonal Antibody

#### Product data:

|                         |  |
|-------------------------|--|
| Product Type:           | Primary Antibodies   |
| Applications:           | WB   |
| Recommended Dilution:   | WB,1:500 - 1:2000  |
| Reactivity:             | Human, Mouse   |
| Modifications:          | Unmodified   |
| Host:                   | Rabbit   |
| Isotype:                | IgG  |
| Clonality:              | Polyclonal   |
| Immunogen:              | A synthetic peptide corresponding to a sequence within amino acids 350-450 of human ELL (NP_006523.1). |
| Formulation:            | Buffer: PBS with 0.02% sodium azide,50% glycerol,pH7.3.  |
| Concentration:          | lot specific   |
| Purification:           | Affinity purification  |
| Conjugation:            | Unconjugated   |
| Storage:                | Store at -20°C. Avoid freeze / thaw cycles.  |
| Stability:              | Shelf life: one year from despatch.  |
| Predicted Protein Size: | 68kDa  |
| Gene Name:              | elongation factor for RNA polymerase II  |
| Database Link:          | <a href="#">Entrez Gene 8178 Human P55199</a>  |



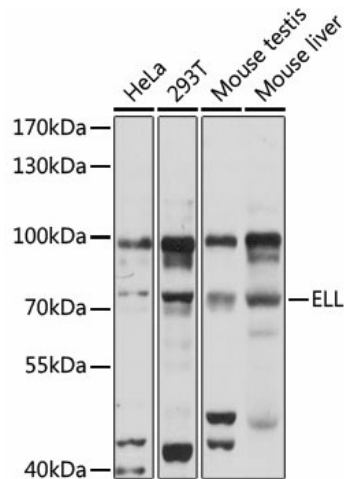
[View online »](#)

**Background:**

Elongation factor component of the super elongation complex (SEC, a complex required to increase the catalytic rate of RNA polymerase II transcription by suppressing transient pausing by the polymerase at multiple sites along the DNA. Elongation factor component of the little elongation complex (LEC, a complex required to regulate small nuclear RNA (snRNA) gene transcription by RNA polymerase II and III. Specifically required for stimulating the elongation step of RNA polymerase II- and III-dependent snRNA gene transcription. ELL also plays an early role before its assembly into in the SEC complex by stabilizing RNA polymerase II recruitment/initiation and entry into the pause site. Required to stabilize the pre-initiation complex and early elongation.

**Synonyms:**

C19orf17; DKFZp434I1916; ELL1; MEN

**Product images:**

Western blot analysis of extracts of various cell lines, using ELL antibody (TA375857) at 1:1000 dilution. | Secondary antibody: HRP Goat Anti-Rabbit IgG (H+L) at 1:10000 dilution. | Lysates/proteins: 25ug per lane. | Blocking buffer: 3% nonfat dry milk in TBST. | Detection: ECL Basic Kit . | Exposure time: 10s.