

Product datasheet for **TA375851**

ESE1 (ELF3) Rabbit Polyclonal Antibody

Product data:

Product Type:	Primary Antibodies
Applications:	IP, WB
Recommended Dilution:	WB, 1:500 - 1:2000 IP, 1:20 - 1:50
Reactivity:	Human, Mouse
Modifications:	Unmodified
Host:	Rabbit
Isotype:	IgG
Clonality:	Polyclonal
Immunogen:	Recombinant fusion protein containing a sequence corresponding to amino acids 1-280 of human ESE1/ESE1/ELF3 (NP_004424.3).
Formulation:	Buffer: PBS with 0.02% sodium azide, 50% glycerol, pH 7.3.
Concentration:	lot specific
Purification:	Affinity purification
Conjugation:	Unconjugated
Storage:	Store at -20°C. Avoid freeze / thaw cycles.
Stability:	Shelf life: one year from despatch.
Predicted Protein Size:	39kDa/41kDa
Gene Name:	E74 like ETS transcription factor 3
Database Link:	Entrez Gene 1999 Human P78545



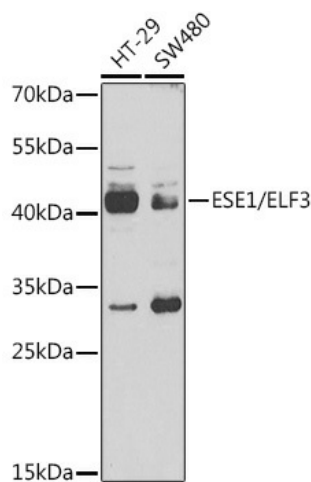
[View online »](#)

Background:

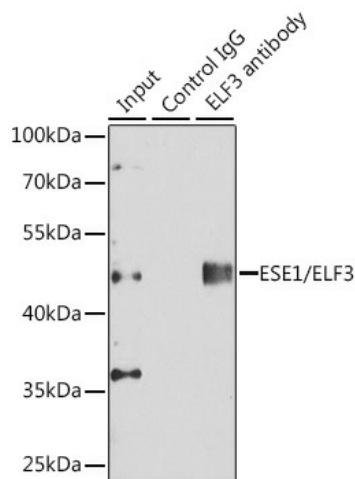
Transcriptional activator that binds and transactivates ETS sequences containing the consensus nucleotide core sequence GGA[AT]. Acts synergistically with POU2F3 to transactivate the SPRR2A promoter and with RUNX1 to transactivate the ANGPT1 promoter. Also transactivates collagenase, CCL20, CLND7, FLG, KRT8, NOS2, PTGS2, SPRR2B, TGFBR2 and TGM3 promoters. Represses KRT4 promoter activity. Involved in mediating vascular inflammation. May play an important role in epithelial cell differentiation and tumorigenesis. May be a critical downstream effector of the ERBB2 signaling pathway. May be associated with mammary gland development and involution. Plays an important role in the regulation of transcription with TATA-less promoters in preimplantation embryos, which is essential in preimplantation development (By similarity).

Synonyms:

EPR-1; ERT; ESE-1; ESX; JEN; OTTHUMP00000034052

Product images:


Western blot analysis of extracts of various cell lines, using ESE1/ESE1/ELF3 antibody (TA375851) at 1:1000 dilution. |Secondary antibody: HRP Goat Anti-Rabbit IgG (H+L) at 1:10000 dilution. |Lysates/proteins: 25ug per lane. |Blocking buffer: 3% nonfat dry milk in TBST. |Detection: ECL Basic Kit . |Exposure time: 90s.



Immunoprecipitation analysis of 150ug extracts of A549 cells using 3ug ESE1/ESE1/ELF3 antibody (TA375851). Western blot was performed from the immunoprecipitate using ESE1/ESE1/ELF3 antibody (TA375851) at a dilution of 1:500.____Detection: ECL Enhanced Kit . _Exposure time: 30s.