

Product datasheet for **TA375850S**

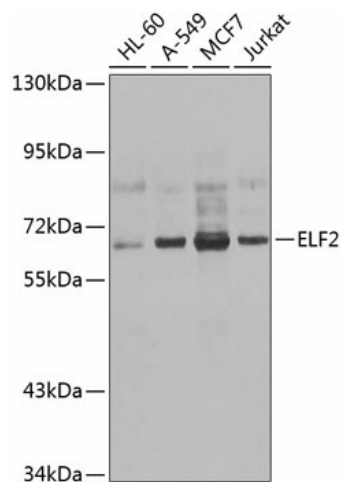
ELF2 Rabbit Polyclonal Antibody

Product data:

| | |
|-------------------------|--|
| Product Type: | Primary Antibodies |
| Applications: | ELISA, WB |
| Recommended Dilution: | WB, 1:500 - 1:2000 ELISA, Recommended starting concentration is 1 µg/mL. Please optimize the concentration based on your specific assay requirements. |
| Reactivity: | Human, Mouse |
| Modifications: | Unmodified |
| Host: | Rabbit |
| Isotype: | IgG |
| Clonality: | Polyclonal |
| Formulation: | Buffer: PBS with 0.02% sodium azide, 50% glycerol, pH 7.3. |
| Concentration: | lot specific |
| Purification: | Affinity purification |
| Conjugation: | Unconjugated |
| Storage: | Store at -20°C. Avoid freeze / thaw cycles. |
| Stability: | Shelf life: one year from despatch. |
| Predicted Protein Size: | 64kDa |
| Gene Name: | E74 like ETS transcription factor 2 |
| Database Link: | Entrez Gene 1998 Human Q15723 |
| Background: | Enables DNA-binding transcription factor activity, RNA polymerase II-specific and sequence-specific double-stranded DNA binding activity. Involved in negative regulation of transcription, DNA-templated; positive regulation of transcription, DNA-templated; and regulation of transcription by RNA polymerase II. Located in cytosol and nuclear body. |
| Synonyms: | EU32; NERF; NERF-1A; NERF-1a,b; NERF-1B; NERF-2; OTTHUMP00000164540 |



[View online »](#)

Product images:

Western blot analysis of various lysates using ELF2 Rabbit pAb (TA375850S) at 1:1000 dilution. Secondary antibody: HRP-conjugated Goat anti-Rabbit IgG (H+L) (AS014) at 1:10000 dilution. Lysates/proteins: 25µg per lane. Blocking buffer: 3% nonfat dry milk in TBST. Detection: ECL Basic Kit (RM00020). Exposure time: 1s.