

Product datasheet for **TA375850**

ELF2 Rabbit Polyclonal Antibody

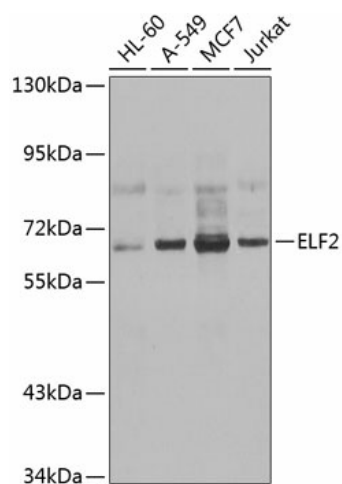
Product data:

Product Type:	Primary Antibodies
Applications:	WB
Recommended Dilution:	WB,1:500 - 1:2000
Reactivity:	Human, Mouse
Modifications:	Unmodified
Host:	Rabbit
Isotype:	IgG
Clonality:	Polyclonal
Immunogen:	Recombinant fusion protein containing a sequence corresponding to amino acids 1-140 of human ELF2 (NP_006865.1).
Formulation:	Buffer: PBS with 0.02% sodium azide,50% glycerol,pH7.3.
Concentration:	lot specific
Purification:	Affinity purification
Conjugation:	Unconjugated
Storage:	Store at -20°C. Avoid freeze / thaw cycles.
Stability:	Shelf life: one year from despatch.
Predicted Protein Size:	54kDa/56kDa/57kDa/62kDa/63kDa
Gene Name:	E74 like ETS transcription factor 2
Database Link:	Entrez Gene 1998 Human Q15723
Background:	Isoform 1 transcriptionally activates the LYN and BLK promoters and acts synergistically with RUNX1 to transactivate the BLK promoter.; Isoform 2 may function in repression of RUNX1-mediated transactivation.
Synonyms:	EU32; NERF; NERF-1A; NERF-1a,b; NERF-1B; NERF-2; OTTHUMP00000164540



[View online »](#)

Product images:



Western blot analysis of extracts of various cell lines, using ELF2 antibody (TA375850) at 1:1000 dilution. | Secondary antibody: HRP Goat Anti-Rabbit IgG (H+L) at 1:10000 dilution. | Lysates/proteins: 25ug per lane. | Blocking buffer: 3% nonfat dry milk in TBST. | Detection: ECL Basic Kit . | Exposure time: 1s.