

## Product datasheet for **TA375849S**

### ELAVL4 Rabbit Polyclonal Antibody

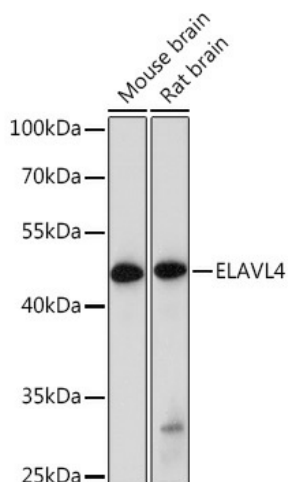
#### Product data:

Product Type:	Primary Antibodies
Applications:	ELISA, ICC/IF, IHC, WB
Recommended Dilution:	WB, 1:500 - 1:2000 IHC-P, 1:50 - 1:200 IF/ICC, 1:50 - 1:200 ELISA, Recommended starting concentration is 1 µg/mL. Please optimize the concentration based on your specific assay requirements.
Reactivity:	Mouse, Rat
Modifications:	Unmodified
Host:	Rabbit
Isotype:	IgG
Clonality:	Polyclonal
Formulation:	PBS with 0.09% Sodium azide, 50% glycerol, pH 7.3.
Concentration:	lot specific
Purification:	Affinity purification
Conjugation:	Unconjugated
Storage:	Store at -20°C. Avoid freeze / thaw cycles.
Stability:	Shelf life: one year from despatch.
Predicted Protein Size:	42kDa
Gene Name:	ELAV like neuron-specific RNA binding protein 4
Database Link:	<a href="#">P26378</a>
Background:	Enables mRNA 3'-UTR AU-rich region binding activity; poly(A) binding activity; and pre-mRNA intronic pyrimidine-rich binding activity. Involved in 3'-UTR-mediated mRNA stabilization; RNA processing; and positive regulation of 3'-UTR-mediated mRNA stabilization. Predicted to be located in axon; cytoplasm; and dendrite. Predicted to be part of polysomal ribosome. Predicted to be active in glutamatergic synapse.
Synonyms:	HUD; OTTHUMP00000009609; OTTHUMP00000009611; PNEM



[View online »](#)

## Product images:



Western blot analysis of various lysates using ELAVL4 Rabbit pAb ([TA375849]) at 1:1000 dilution.

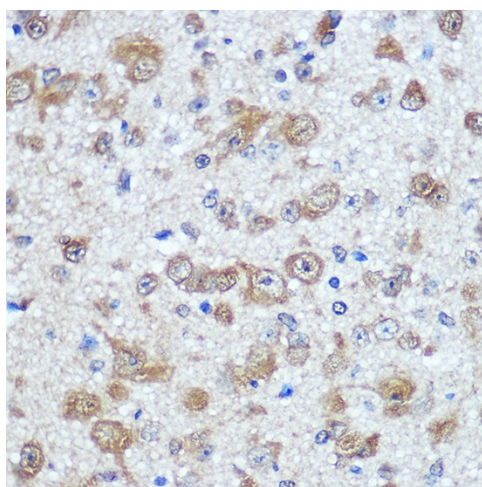
Secondary antibody: HRP-conjugated Goat anti-Rabbit IgG (H+L) (AS014) at 1:10000 dilution.

Lysates/proteins: 25µg per lane.

Blocking buffer: 3% nonfat dry milk in TBST.

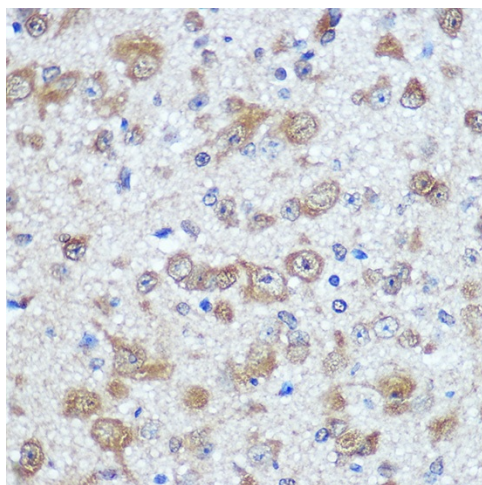
Detection: ECL Basic Kit (RM00020).

Exposure time: 90s.

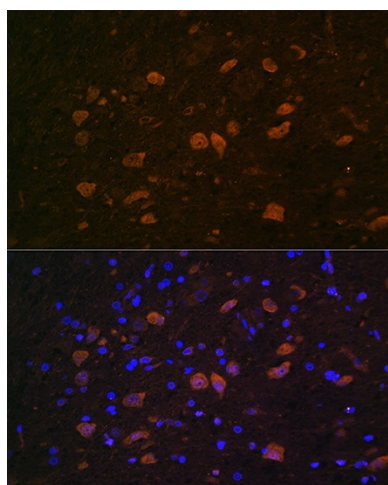


Immunohistochemistry analysis of paraffin-embedded Rat brain using ELAVL4 Rabbit pAb ([TA375849]) at dilution of 1:100 (40x lens).

Microwave antigen retrieval performed with 0.01M PBS Buffer (pH 7.2) prior to IHC staining.



Immunohistochemistry analysis of paraffin-embedded Mouse brain using ELAVL4 Rabbit pAb ([TA375849]) at dilution of 1:100 (40x lens). Microwave antigen retrieval performed with 0.01M PBS Buffer (pH 7.2) prior to IHC staining.



Immunofluorescence analysis of paraffin-embedded Rat brain using ELAVL4 Rabbit pAb ([TA375849]) at dilution of 1:100. Secondary antibody: Cy3-conjugated Goat anti-Rabbit IgG (H+L) (AS007) at 1:500 dilution. Blue: DAPI for nuclear staining.