

## Product datasheet for **TA375849**

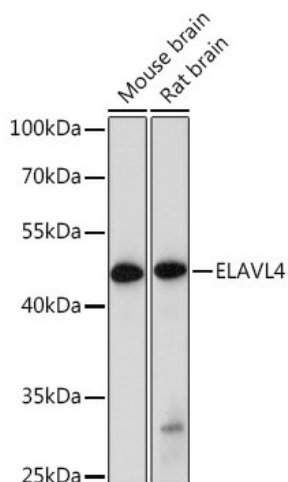
### ELAVL4 Rabbit Polyclonal Antibody

#### Product data:

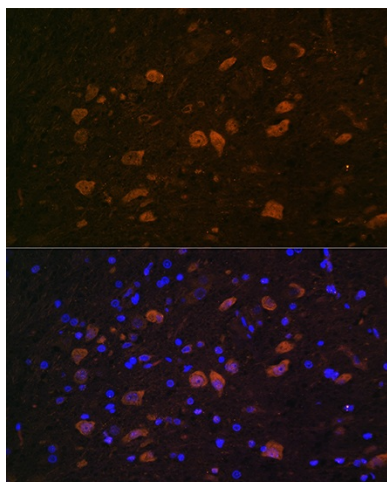
Product Type:	Primary Antibodies
Applications:	ICC/IF, IHC, WB
Recommended Dilution:	WB,1:500 - 1:2000 IHC,1:50 - 1:200 IF,1:50 - 1:200
Reactivity:	Mouse, Rat
Modifications:	Unmodified
Host:	Rabbit
Isotype:	IgG
Clonality:	Polyclonal
Immunogen:	Recombinant fusion protein containing a sequence corresponding to amino acids 1-366 of human ELAVL4 (NP_001138246.1).
Formulation:	Buffer: PBS with 0.02% sodium azide,50% glycerol,pH7.3.
Concentration:	lot specific
Purification:	Affinity purification
Conjugation:	Unconjugated
Storage:	Store at -20°C. Avoid freeze / thaw cycles.
Stability:	Shelf life: one year from despatch.
Predicted Protein Size:	40kDa/41kDa/42kDa
Gene Name:	ELAV like neuron-specific RNA binding protein 4
Database Link:	<a href="#">P26378</a>
Synonyms:	HUD; OTTHUMP00000009609; OTTHUMP00000009611; PNEM



[View online »](#)

**Product images:**

Western blot analysis of extracts of various cell lines, using ELAVL4 Rabbit pAb (TA375849) at 1:1000 dilution. | Secondary antibody: HRP Goat Anti-Rabbit IgG (H+L) at 1:10000 dilution. | Lysates/proteins: 25ug per lane. | Blocking buffer: 3% nonfat dry milk in TBST. | Detection: ECL Basic Kit . | Exposure time: 90s.



Immunofluorescence analysis of Rat brain using ELAVL4 Rabbit pAb (TA375849) at dilution of 1:100. Blue: DAPI for nuclear staining.