

Product datasheet for **TA375837S**

EIF4G1 Rabbit Polyclonal Antibody

Product data:

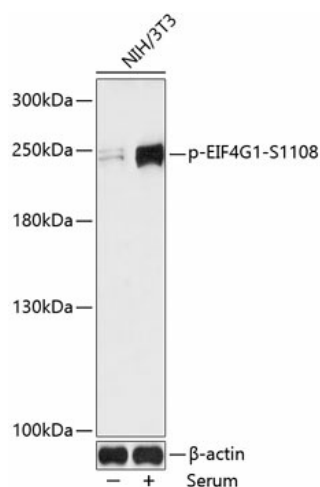
Product Type:	Primary Antibodies
Applications:	WB
Recommended Dilution:	WB,1:500 - 1:2000
Reactivity:	Human, Mouse, Rat
Modifications:	Phospho S1108
Host:	Rabbit
Isotype:	IgG
Clonality:	Polyclonal
Immunogen:	A synthetic phosphorylated peptide around S1108 of human EIF4G1 (NP_001181875.1).
Formulation:	Buffer: PBS with 0.02% sodium azide,50% glycerol,pH7.3.
Concentration:	lot specific
Purification:	Affinity purification
Conjugation:	Unconjugated
Storage:	Store at -20°C. Avoid freeze / thaw cycles.
Stability:	Shelf life: one year from despatch.
Predicted Protein Size:	154kDa/158kDa/166kDa/171kDa/175kDa/176kDa
Gene Name:	eukaryotic translation initiation factor 4 gamma 1
Database Link:	Entrez Gene 1981 Human Q04637
Background:	The protein encoded by this gene is a component of the multi-subunit protein complex EIF4F. This complex facilitates the recruitment of mRNA to the ribosome, which is a rate-limiting step during the initiation phase of protein synthesis. The recognition of the mRNA cap and the ATP-dependent unwinding of 5'-terminal secondary structure is catalyzed by factors in this complex. The subunit encoded by this gene is a large scaffolding protein that contains binding sites for other members of the EIF4F complex. A domain at its N-terminus can also interact with the poly(A)-binding protein, which may mediate the circularization of mRNA during translation. Alternative splicing results in multiple transcript variants, some of which are derived from alternative promoter usage.



[View online »](#)

Synonyms: DKFZp686A1451; eIF-4G1; EIF4-gamma; EIF4F; EIF4G; EIF4G1; p220

Product images:



Western blot analysis of extracts of NIH/3T3 cells, using Phospho-EIF4G1-S1108 antibody ([TA375837]) at 1:1000 dilution. NIH/3T3 cells were treated by 10% FBS for 30 minutes after serum-starvation overnight. | Secondary antibody: HRP Goat Anti-Rabbit IgG (H+L) at 1:10000 dilution. | Lysates/proteins: 25ug per lane. | Blocking buffer: 3% BSA. | Detection: ECL Enhanced Kit . | Exposure time: 60s.