

## Product datasheet for **TA375836S**

### EIF4G1 Rabbit Polyclonal Antibody

#### Product data:

Product Type:	Primary Antibodies
Applications:	ELISA, IHC, IP, WB
Recommended Dilution:	WB, 1:100 - 1:500 IHC-P, 1:50 - 1:200 IP, 0.5µg-4µg antibody for 200µg-400µg extracts of whole cells ELISA, Recommended starting concentration is 1 µg/mL. Please optimize the concentration based on your specific assay requirements.
Reactivity:	Human
Modifications:	Unmodified
Host:	Rabbit
Isotype:	IgG
Clonality:	Polyclonal
Formulation:	Buffer: PBS with 0.02% sodium azide, 50% glycerol, pH7.3.
Concentration:	lot specific
Purification:	Affinity purification
Conjugation:	Unconjugated
Storage:	Store at -20°C. Avoid freeze / thaw cycles.
Stability:	Shelf life: one year from despatch.
Predicted Protein Size:	175kDa
Gene Name:	eukaryotic translation initiation factor 4 gamma 1
Database Link:	<a href="#">Entrez Gene 1981 Human Q04637</a>



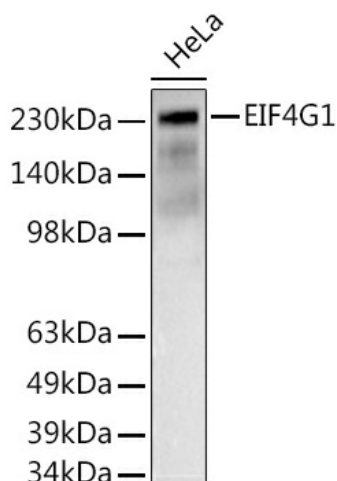
[View online »](#)

**Background:**

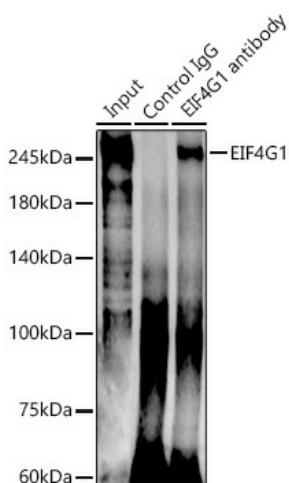
The protein encoded by this gene is a component of the multi-subunit protein complex EIF4F. This complex facilitates the recruitment of mRNA to the ribosome, which is a rate-limiting step during the initiation phase of protein synthesis. The recognition of the mRNA cap and the ATP-dependent unwinding of 5'-terminal secondary structure is catalyzed by factors in this complex. The subunit encoded by this gene is a large scaffolding protein that contains binding sites for other members of the EIF4F complex. A domain at its N-terminus can also interact with the poly(A)-binding protein, which may mediate the circularization of mRNA during translation. Alternative splicing results in multiple transcript variants, some of which are derived from alternative promoter usage.

**Synonyms:**

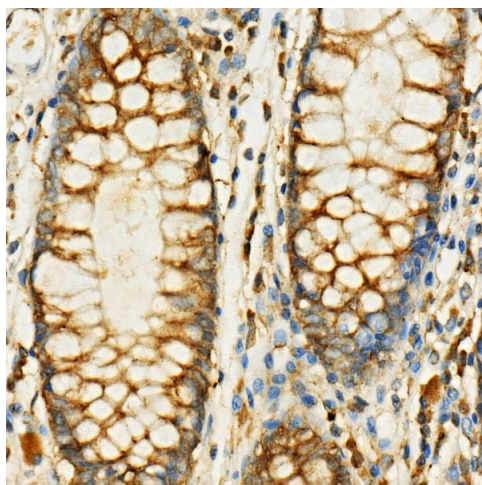
DKFZp686A1451; eIF-4G1; EIF4-gamma; EIF4F; EIF4G; EIF4G1; p220

**Product images:**


Western blot analysis of lysates from HeLa cells



Immunoprecipitation analysis of 300 µg extracts of HeLa cells using 3 µg EIF4G1 antibody ([TA375836]). Western blot was performed from the immunoprecipitate using EIF4G1 antibody ([TA375836]) at a dilution of 1:500.



Immunohistochemistry analysis of paraffin-embedded Human colon carcinoma using EIF4G1 Rabbit pAb ([TA375836]) at dilution of 1:100 (40x lens). High pressure antigen retrieval performed with 0.01M Citrate Bufferr (pH 6.0) prior to IHC staining.