

## Product datasheet for **TA375834**

### EIF4ENIF1 Rabbit Polyclonal Antibody

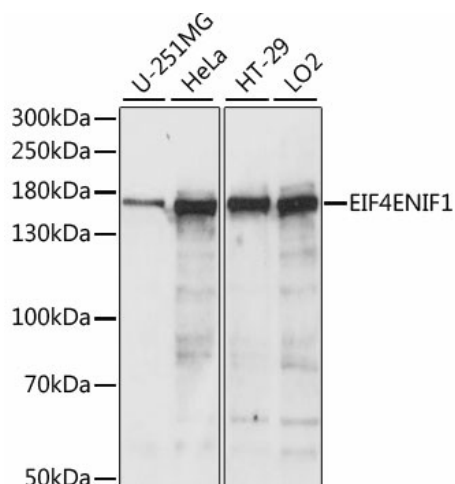
#### Product data:

Product Type:	Primary Antibodies
Applications:	ICC/IF, WB
Recommended Dilution:	WB,1:500 - 1:2000 IF,1:50 - 1:200
Reactivity:	Human, Mouse, Rat
Modifications:	Unmodified
Host:	Rabbit
Isotype:	IgG
Clonality:	Polyclonal
Immunogen:	A synthetic peptide corresponding to a sequence within amino acids 150-250 of human EIF4ENIF1 (NP_001157973.1).
Formulation:	Buffer: PBS with 0.02% sodium azide,50% glycerol,pH7.3.
Concentration:	lot specific
Purification:	Affinity purification
Conjugation:	Unconjugated
Storage:	Store at -20°C. Avoid freeze / thaw cycles.
Stability:	Shelf life: one year from despatch.
Predicted Protein Size:	88kDa/108kDa
Gene Name:	eukaryotic translation initiation factor 4E nuclear import factor 1
Database Link:	<a href="#">Entrez Gene 56478 Human Q9NRA8</a>
Background:	The protein encoded by this gene is a nucleocytoplasmic shuttle protein for the translation initiation factor eIF4E. This shuttle protein interacts with the importin alpha-beta complex to mediate nuclear import of eIF4E. It is predominantly cytoplasmic; its own nuclear import is regulated by a nuclear localization signal and nuclear export signals. Multiple transcript variants encoding different isoforms have been found for this gene.
Synonyms:	4E-T; 2610509L04Rik; Clast4; eIF4E-transporter; FLJ21601; FLJ26551; OTTHUMP00000063276

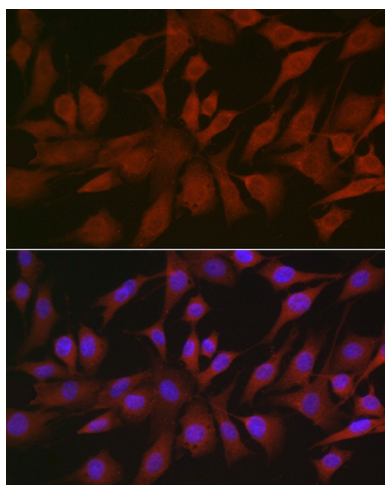


[View online »](#)

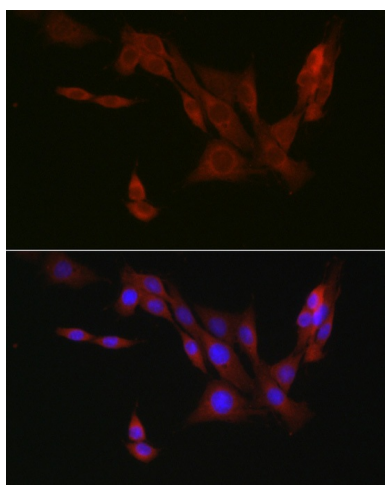
## Product images:



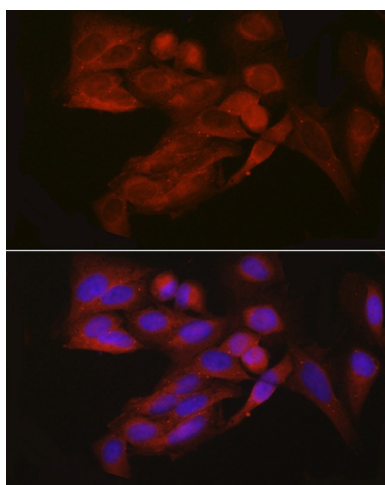
Western blot analysis of extracts of various cell lines, using EIF4ENIF1 antibody (TA375834) at 1:1000 dilution. | Secondary antibody: HRP Goat Anti-Rabbit IgG (H+L) at 1:10000 dilution. | Lysates/proteins: 25ug per lane. | Blocking buffer: 3% nonfat dry milk in TBST. | Detection: ECL Basic Kit. | Exposure time: 3s.



Immunofluorescence analysis of NIH/3T3 cells using EIF4ENIF1 Rabbit pAb (TA375834) at dilution of 1:100 (40x lens). Blue: DAPI for nuclear staining.



Immunofluorescence analysis of PC-12 cells using EIF4ENIF1 Rabbit pAb (TA375834) at dilution of 1:100 (40x lens). Blue: DAPI for nuclear staining.



Immunofluorescence analysis of U2OS cells using EIF4ENIF1 Rabbit pAb (TA375834) at dilution of 1:100 (40x lens). Blue: DAPI for nuclear staining.