

Product datasheet for **TA375829S**

EIF4EBP1 Rabbit Polyclonal Antibody

Product data:

| | |
|-------------------------|--|
| Product Type: | Primary Antibodies |
| Applications: | ICC/IF, IHC, WB |
| Recommended Dilution: | WB,1:500 - 1:1000 IHC,1:50 - 1:200 IF,1:100 - 1:200 |
| Reactivity: | Human, Mouse, Rat |
| Modifications: | Unmodified |
| Host: | Rabbit |
| Isotype: | IgG |
| Clonality: | Polyclonal |
| Immunogen: | A synthetic peptide corresponding to a sequence within amino acids 50 to the C-terminus of human eIF4EBP1 (NP_004086.1). |
| Formulation: | Buffer: PBS with 0.02% sodium azide,50% glycerol,pH7.3. |
| Concentration: | lot specific |
| Purification: | Affinity purification |
| Conjugation: | Unconjugated |
| Storage: | Store at -20°C. Avoid freeze / thaw cycles. |
| Stability: | Shelf life: one year from despatch. |
| Predicted Protein Size: | 12kDa |
| Gene Name: | eukaryotic translation initiation factor 4E binding protein 1 |
| Database Link: | Entrez Gene 1978 Human Q13541 |



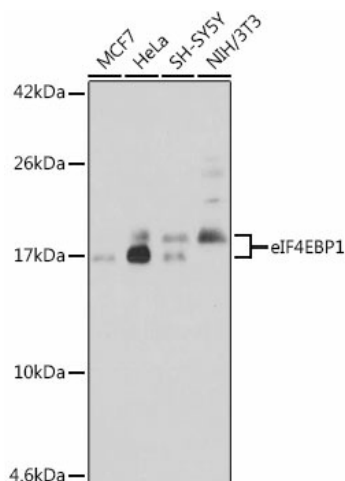
[View online »](#)

Background:

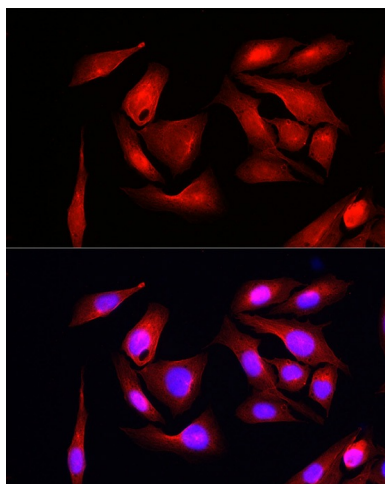
This gene encodes one member of a family of translation repressor proteins. The protein directly interacts with eukaryotic translation initiation factor 4E (eIF4E), which is a limiting component of the multisubunit complex that recruits 40S ribosomal subunits to the 5' end of mRNAs. Interaction of this protein with eIF4E inhibits complex assembly and represses translation. This protein is phosphorylated in response to various signals including UV irradiation and insulin signaling, resulting in its dissociation from eIF4E and activation of mRNA translation.

Synonyms:

4E-BP1; 4EBP1; BP-1; MGC4316; PHAS-I

Product images:

Western blot analysis of extracts of various cell lines, using eIF4EBP1 antibody ([TA375829]) at 1:1000 dilution. | Secondary antibody: HRP Goat Anti-Rabbit IgG (H+L) at 1:10000 dilution. | Lysates/proteins: 25ug per lane. | Blocking buffer: 3% nonfat dry milk in TBST. | Detection: ECL Enhanced Kit. | Exposure time: 300s.



Immunofluorescence analysis of U2OS cells using eIF4EBP1 Rabbit pAb ([TA375829]) at dilution of 1:150 (40x lens). Blue: DAPI for nuclear staining.