

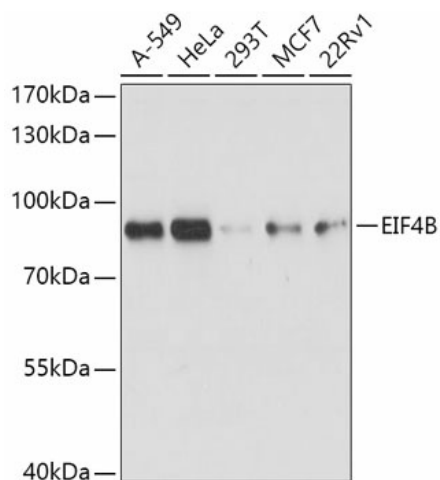
## Product datasheet for TA375822S

### EIF4B Rabbit Polyclonal Antibody

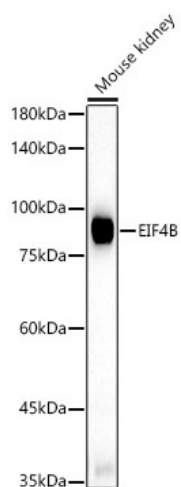
#### Product data:

Product Type:	Primary Antibodies
Applications:	ELISA, ICC/IF, WB
Recommended Dilution:	WB, 1:500 - 1:1000 IF/ICC, 1:50 - 1:200 ELISA, Recommended starting concentration is 1 µg/mL. Please optimize the concentration based on your specific assay requirements.
Reactivity:	Human, Mouse, Rat
Modifications:	Unmodified
Host:	Rabbit
Isotype:	IgG
Clonality:	Polyclonal
Formulation:	Buffer: PBS with 0.02% sodium azide, 50% glycerol, pH 7.3.
Concentration:	lot specific
Purification:	Affinity purification
Conjugation:	Unconjugated
Storage:	Store at -20°C. Avoid freeze / thaw cycles.
Stability:	Shelf life: one year from despatch.
Predicted Protein Size:	69kDa
Gene Name:	eukaryotic translation initiation factor 4B
Database Link:	<a href="#">Entrez Gene 1975 Human P23588</a>
Background:	Enables RNA binding activity. Predicted to be involved in eukaryotic translation initiation factor 4F complex assembly and formation of translation preinitiation complex. Located in cytosol. Biomarker of autism spectrum disorder and major depressive disorder.
Synonyms:	EIF-4B; PRO1843

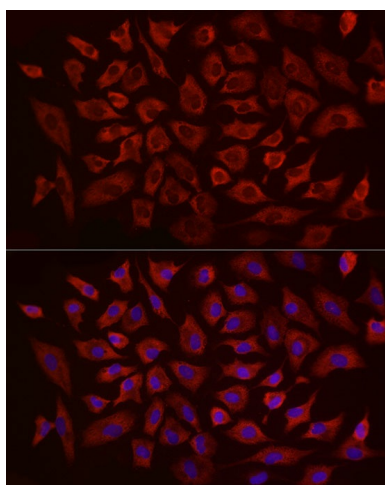

[View online »](#)

**Product images:**


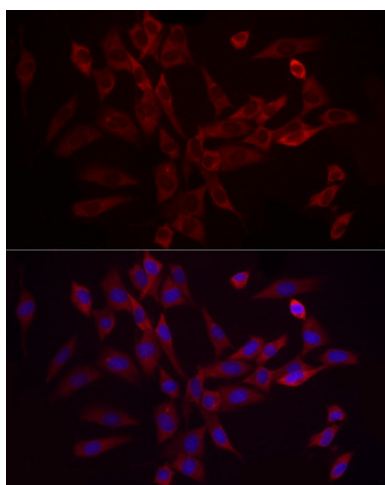
Western blot analysis of lysates from Rat skeletal muscle



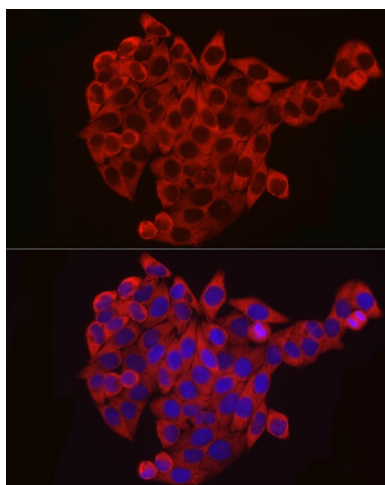
Western blot analysis of lysates from Mouse kidney



Immunofluorescence analysis of A-549 cells using EIF4B Rabbit pAb ([TA375822]) at dilution of 1:20 (40x lens). Secondary antibody: Cy3-conjugated Goat anti-Rabbit IgG (H+L) (AS007) at 1:500 dilution. Blue: DAPI for nuclear staining.



Immunofluorescence analysis of NIH/3T3 cells using EIF4B Rabbit pAb ([TA375822]) at dilution of 1:20 (40x lens). Secondary antibody: Cy3-conjugated Goat anti-Rabbit IgG (H+L) (AS007) at 1:500 dilution. Blue: DAPI for nuclear staining.



Immunofluorescence analysis of HeLa cells using EIF4B Rabbit pAb ([TA375822]) at dilution of 1:20 (40x lens). Secondary antibody: Cy3-conjugated Goat anti-Rabbit IgG (H+L) (AS007) at 1:500 dilution. Blue: DAPI for nuclear staining.