

## Product datasheet for **TA375820S**

### EIF4A2 Rabbit Polyclonal Antibody

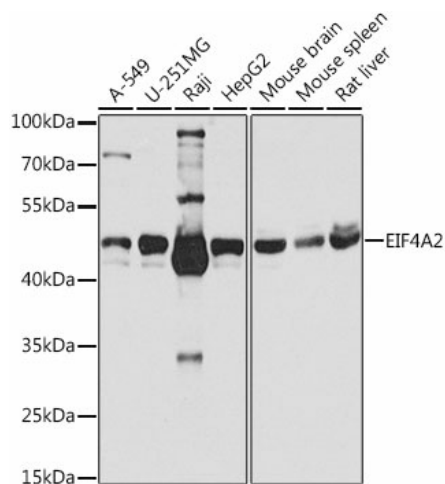
#### Product data:

Product Type:	Primary Antibodies
Applications:	ELISA, WB
Recommended Dilution:	WB, 1:500 - 1:1000 ELISA, Recommended starting concentration is 1 µg/mL. Please optimize the concentration based on your specific assay requirements.
Reactivity:	Human, Mouse, Rat
Modifications:	Unmodified
Host:	Rabbit
Isotype:	IgG
Clonality:	Polyclonal
Formulation:	Buffer: PBS with 0.02% sodium azide, 50% glycerol, pH 7.3.
Concentration:	lot specific
Purification:	Affinity purification
Conjugation:	Unconjugated
Storage:	Store at -20°C. Avoid freeze / thaw cycles.
Stability:	Shelf life: one year from despatch.
Predicted Protein Size:	46kDa
Gene Name:	eukaryotic translation initiation factor 4A2
Database Link:	<a href="#">Entrez Gene 1974 Human Q14240</a>
Background:	Enables ATP hydrolysis activity. Involved in negative regulation of RNA-directed 5'-3' RNA polymerase activity. Located in perinuclear region of cytoplasm.
Synonyms:	BM-010; DDX2B; eIF-4A-II; EIF4A; eIF4A-II; EIF4F



[View online »](#)

## Product images:



Western blot analysis of various lysates using EIF4A2 Rabbit pAb (TA375820S) at 1:1000 dilution.

Secondary antibody: HRP-conjugated Goat anti-Rabbit IgG (H+L) (AS014) at 1:10000 dilution.

Lysates/proteins: 25µg per lane.

Blocking buffer: 3% nonfat dry milk in TBST.

Detection: ECL Basic Kit (RM00020).

Exposure time: 10s.