

Product datasheet for **TA375798S**

eIF2B epsilon (EIF2B5) Rabbit Polyclonal Antibody

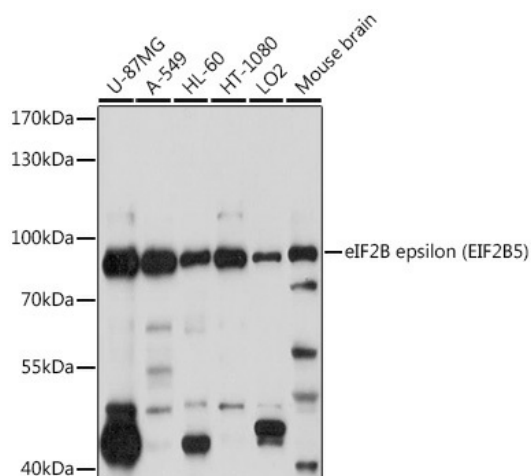
Product data:

Product Type:	Primary Antibodies
Applications:	ELISA, ICC/IF, IP, WB
Recommended Dilution:	WB, 1:500 - 1:2000 IF/ICC, 1:50 - 1:200 IP, 0.5µg-4µg antibody for 200µg-400µg extracts of whole cells ELISA, Recommended starting concentration is 1 µg/mL. Please optimize the concentration based on your specific assay requirements.
Reactivity:	Human, Mouse, Rat
Modifications:	Unmodified
Host:	Rabbit
Isotype:	IgG
Clonality:	Polyclonal
Formulation:	Buffer: PBS with 0.02% sodium azide, 50% glycerol, pH7.3.
Concentration:	lot specific
Purification:	Affinity purification
Conjugation:	Unconjugated
Storage:	Store at -20°C. Avoid freeze / thaw cycles.
Stability:	Shelf life: one year from despatch.
Predicted Protein Size:	80kDa
Gene Name:	eukaryotic translation initiation factor 2B subunit epsilon
Database Link:	Entrez Gene 8893 Human Q13144
Background:	This gene encodes one of five subunits of eukaryotic translation initiation factor 2B (EIF2B), a GTP exchange factor for eukaryotic initiation factor 2 and an essential regulator for protein synthesis. Mutations in this gene and the genes encoding other EIF2B subunits have been associated with leukoencephalopathy with vanishing white matter.
Synonyms:	CACH; CLE; EIF-2B; EIF2BE; EIF2Bepsilon; LVWM



[View online »](#)

Product images:



Western blot analysis of various lysates using eIF2B epsilon (EIF2B5) Rabbit pAb (TA375798) at 1:1000 dilution.

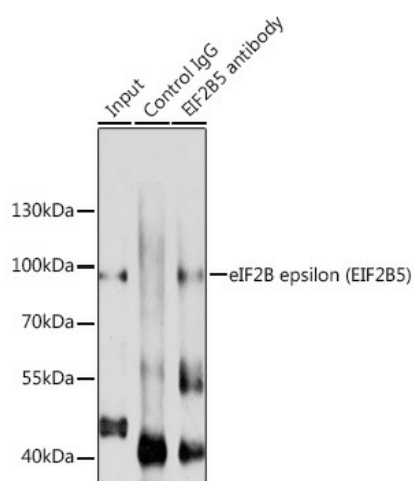
Secondary antibody: HRP-conjugated Goat anti-Rabbit IgG (H+L) (AS014) at 1:10000 dilution.

Lysates/proteins: 25µg per lane.

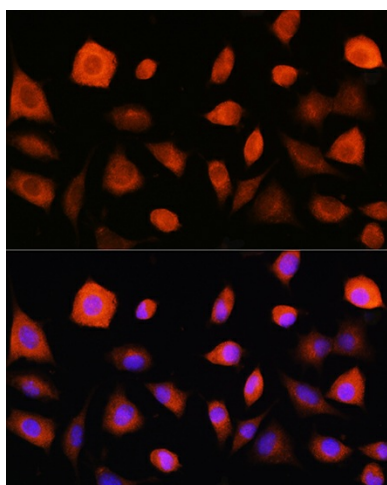
Blocking buffer: 3% nonfat dry milk in TBST.

Detection: ECL Basic Kit (RM00020).

Exposure time: 10s.



Immunoprecipitation analysis of 200 µg extracts of A-549 cells using 3 µg eIF2B epsilon (EIF2B5) antibody (TA375798). Western blot was performed from the immunoprecipitate using eIF2B epsilon (EIF2B5) antibody (TA375798) at a dilution of 1:1000.



Immunofluorescence analysis of L929 cells using eIF2B epsilon (eIF2B epsilon (EIF2B5)) Rabbit pAb ([TA375798]) at dilution of 1:100. Secondary antibody: Cy3-conjugated Goat anti-Rabbit IgG (H+L) (AS007) at 1:500 dilution. Blue: DAPI for nuclear staining.