

## Product datasheet for **TA375784**

### eIF1A (EIF1AX) Rabbit Polyclonal Antibody

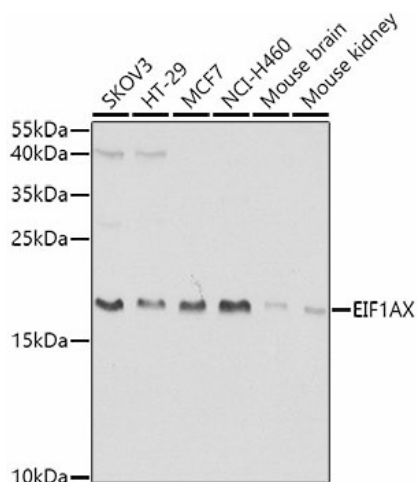
#### Product data:

Product Type:	Primary Antibodies
Applications:	ICC/IF, IHC, WB
Recommended Dilution:	WB,1:200 - 1:2000 IHC,1:100 - 1:200 IF,1:50 - 1:200
Reactivity:	Human, Mouse, Rat
Modifications:	Unmodified
Host:	Rabbit
Isotype:	IgG
Clonality:	Polyclonal
Immunogen:	Recombinant fusion protein containing a sequence corresponding to amino acids 10-144 of human EIF1AX (NP_001403.1).
Formulation:	Buffer: PBS with 0.02% sodium azide,50% glycerol,pH7.3.
Concentration:	lot specific
Purification:	Affinity purification
Conjugation:	Unconjugated
Storage:	Store at -20°C. Avoid freeze / thaw cycles.
Stability:	Shelf life: one year from despatch.
Predicted Protein Size:	16kDa
Gene Name:	eukaryotic translation initiation factor 1A, X-linked
Database Link:	<a href="#">Entrez Gene 1964 Human P47813</a>
Background:	This gene encodes an essential eukaryotic translation initiation factor. The protein is required for the binding of the 43S complex (a 40S subunit, eIF2/GTP/Met-tRNA <sup>i</sup> and eIF3) to the 5' end of capped RNA.
Synonyms:	eIF-1A; eIF-4C; EIF1A; EIF1AP1; EIF4C

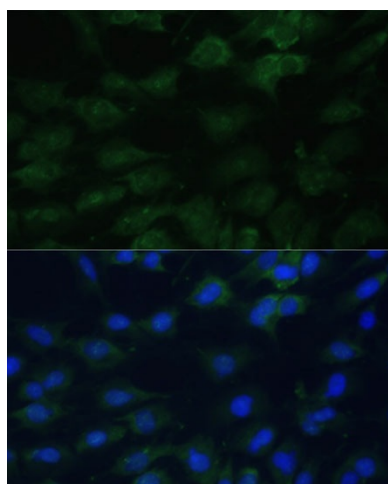


[View online »](#)

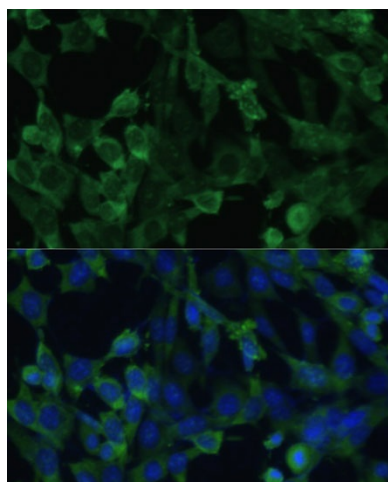
**Product images:**



Western blot analysis of extracts of various cell lines, using EIF1AX antibody (TA375784) at 1:1000 dilution. | Secondary antibody: HRP Goat Anti-Rabbit IgG (H+L) at 1:10000 dilution. | Lysates/proteins: 25ug per lane. | Blocking buffer: 3% nonfat dry milk in TBST. | Detection: ECL Basic Kit . | Exposure time: 30s.



Immunofluorescence analysis of C6 cells using EIF1AX Polyclonal Antibody (TA375784) at dilution of 1:100 (40x lens). Blue: DAPI for nuclear staining.



Immunofluorescence analysis of NIH-3T3 cells using EIF1AX Polyclonal Antibody (TA375784) at dilution of 1:100 (40x lens). Blue: DAPI for nuclear staining.

