

Product datasheet for **TA375782S**

EHMT1/GLP (EHMT1) Rabbit Polyclonal Antibody

Product data:

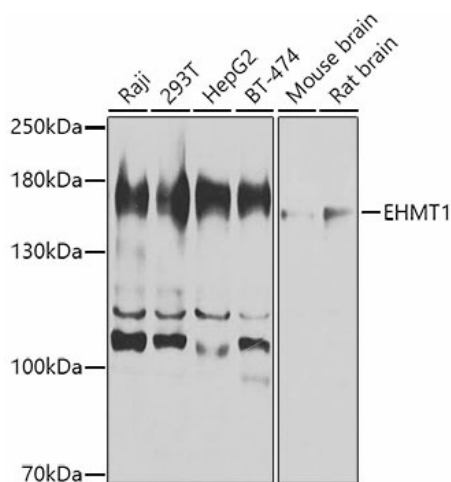
Product Type:	Primary Antibodies
Applications:	ELISA, WB
Recommended Dilution:	WB, 1:500 - 1:2000 ELISA, Recommended starting concentration is 1 µg/mL. Please optimize the concentration based on your specific assay requirements.
Reactivity:	Human, Mouse, Rat
Modifications:	Unmodified
Host:	Rabbit
Isotype:	IgG
Clonality:	Polyclonal
Formulation:	Buffer: PBS with 0.02% sodium azide, 50% glycerol, pH 7.3.
Concentration:	lot specific
Purification:	Affinity purification
Conjugation:	Unconjugated
Storage:	Store at -20°C. Avoid freeze / thaw cycles.
Stability:	Shelf life: one year from despatch.
Predicted Protein Size:	141kDa
Gene Name:	euchromatic histone lysine methyltransferase 1
Database Link:	Entrez Gene 79813 Human Q9H9B1
Background:	The protein encoded by this gene is a histone methyltransferase that methylates the lysine-9 position of histone H3. This action marks the genomic region packaged with these methylated histones for transcriptional repression. This protein may be involved in the silencing of MYC- and E2F-responsive genes and therefore could play a role in the G0/G1 cell cycle transition. Defects in this gene are a cause of chromosome 9q subtelomeric deletion syndrome (9q-syndrome, also known as Kleefstra syndrome). Alternative splicing results in multiple transcript variants.



[View online »](#)

Synonyms: bA188C12.1; DEL9q34; DKFZp667M072; Eu-HMTase1; EUHMTASE1; FLJ12879; FP13812; GLP; GLP1; KIAA1876; KMT1D

Product images:



Western blot analysis of various lysates using EHMT1 Rabbit pAb (TA375782S) at 1:1000 dilution.

Secondary antibody: HRP-conjugated Goat anti-Rabbit IgG (H+L) (AS014) at 1:10000 dilution.

Lysates / proteins: 25 µg per lane.

Blocking buffer: 3 % nonfat dry milk in TBST.

Detection: ECL Basic Kit (RM00020).

Exposure time: 180s.