

## Product datasheet for **TA375782**

### **EHMT1/GLP (EHMT1) Rabbit Polyclonal Antibody**

#### **Product data:**

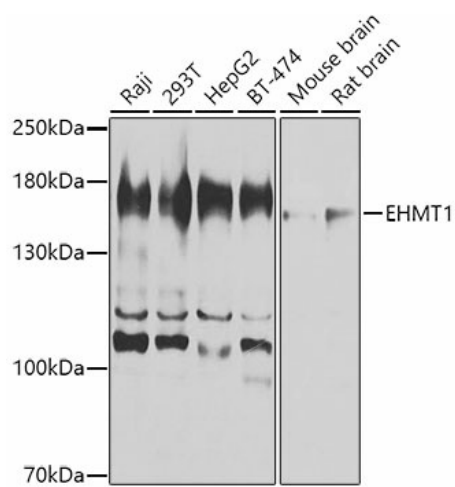
<b>Product Type:</b>	Primary Antibodies
<b>Applications:</b>	WB
<b>Recommended Dilution:</b>	WB,1:500 - 1:2000
<b>Reactivity:</b>	Human, Mouse, Rat
<b>Modifications:</b>	Unmodified
<b>Host:</b>	Rabbit
<b>Isotype:</b>	IgG
<b>Clonality:</b>	Polyclonal
<b>Immunogen:</b>	Recombinant fusion protein containing a sequence corresponding to amino acids 1-260 of human EHMT1 (NP_079033.4).
<b>Formulation:</b>	Buffer: PBS with 0.02% sodium azide,50% glycerol,pH7.3.
<b>Concentration:</b>	lot specific
<b>Purification:</b>	Affinity purification
<b>Conjugation:</b>	Unconjugated
<b>Storage:</b>	Store at -20°C. Avoid freeze / thaw cycles.
<b>Stability:</b>	Shelf life: one year from despatch.
<b>Predicted Protein Size:</b>	7kDa/86kDa/128kDa/141kDa
<b>Gene Name:</b>	euchromatic histone lysine methyltransferase 1
<b>Database Link:</b>	<a href="#">Entrez Gene 79813 Human Q9H9B1</a>
<b>Background:</b>	The protein encoded by this gene is a histone methyltransferase that is part of the E2F6 complex, which represses transcription. The encoded protein methylates the Lys-9 position of histone H3, which tags it for transcriptional repression. This protein may be involved in the silencing of MYC- and E2F-responsive genes and therefore could play a role in the G0/G1 cell cycle transition. Defects in this gene are a cause of chromosome 9q subtelomeric deletion syndrome (9q-syndrome, also known as Kleefstra syndrome). Alternative splicing results in multiple transcript variants.



[View online »](#)

Synonyms: bA188C12.1; DEL9q34; DKFZp667M072; Eu-HMTase1; EUHMTASE1; FLJ12879; FP13812; GLP; GLP1; KIAA1876; KMT1D

### Product images:



Western blot analysis of extracts of various cell lines, using EHMT1 antibody (TA375782) at 1:1000 dilution. | Secondary antibody: HRP Goat Anti-Rabbit IgG (H+L) at 1:10000 dilution. | Lysates/proteins: 25ug per lane. | Blocking buffer: 3% nonfat dry milk in TBST. | Detection: ECL Basic Kit . | Exposure time: 3s.