

## Product datasheet for **TA375774S**

### **EGR4 Rabbit Polyclonal Antibody**

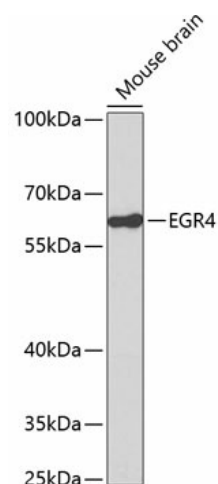
#### **Product data:**

Product Type:	Primary Antibodies
Applications:	ELISA, WB
Recommended Dilution:	WB, 1:500 - 1:2000 ELISA, Recommended starting concentration is 1 µg/mL. Please optimize the concentration based on your specific assay requirements.
Reactivity:	Human, Mouse, Rat
Modifications:	Unmodified
Host:	Rabbit
Isotype:	IgG
Clonality:	Polyclonal
Formulation:	Buffer: PBS with 0.02% sodium azide, 50% glycerol, pH 7.3.
Concentration:	lot specific
Purification:	Affinity purification
Conjugation:	Unconjugated
Storage:	Store at -20°C. Avoid freeze / thaw cycles.
Stability:	Shelf life: one year from despatch.
Predicted Protein Size:	62kDa
Gene Name:	early growth response 4
Database Link:	<a href="#">Entrez Gene 1961 Human Q05215</a>
Background:	Enables DNA-binding transcription activator activity, RNA polymerase II-specific and sequence-specific double-stranded DNA binding activity. Involved in positive regulation of transcription by RNA polymerase II. Predicted to be located in nucleoplasm. Predicted to be part of chromatin.
Synonyms:	AT133; EGR-4; NGFI-C; NGFIC; PAT133



[View online »](#)

## Product images:



Western blot analysis of lysates from mouse brain