

## Product datasheet for **TA375768S**

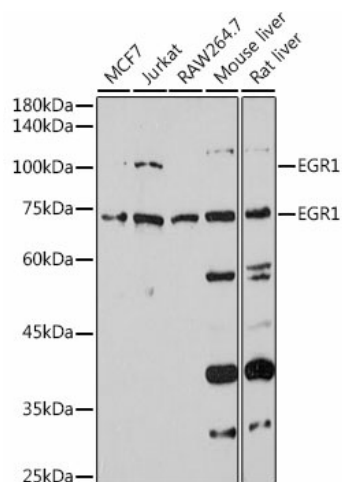
### EGR1 Rabbit Polyclonal Antibody

#### Product data:

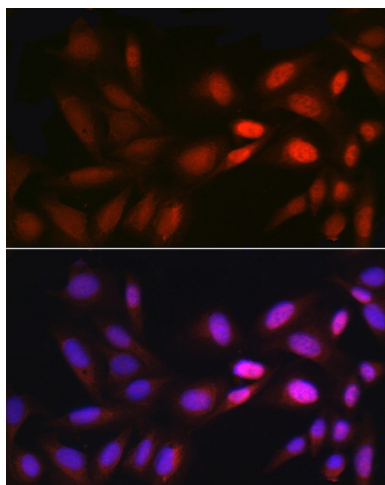
Product Type:	Primary Antibodies
Applications:	ICC/IF, WB
Recommended Dilution:	WB,1:200 - 1:1000 IF,1:50 - 1:200
Reactivity:	Human, Mouse, Rat
Modifications:	Unmodified
Host:	Rabbit
Isotype:	IgG
Clonality:	Polyclonal
Immunogen:	Recombinant protein of human EGR1
Formulation:	Buffer: PBS with 0.02% sodium azide,50% glycerol,pH7.3.
Concentration:	lot specific
Purification:	Affinity purification
Conjugation:	Unconjugated
Storage:	Store at -20°C. Avoid freeze / thaw cycles.
Stability:	Shelf life: one year from despatch.
Predicted Protein Size:	57kDa
Gene Name:	early growth response 1
Database Link:	<a href="#">Entrez Gene 1958 Human P18146</a>
Background:	The protein encoded by this gene belongs to the EGR family of C2H2-type zinc-finger proteins. It is a nuclear protein and functions as a transcriptional regulator. The products of target genes it activates are required for differentiation and mitogenesis. Studies suggest this is a cancer suppressor gene.
Synonyms:	AT225; EGR-1; G0S30; KROX-24; NGFI-A; TIS8; ZIF-268; ZNF225



[View online »](#)

**Product images:**


Western blot analysis of extracts of various cell lines, using EGR1 antibody ([TA375768]) at 1:1000 dilution. | Secondary antibody: HRP Goat Anti-Rabbit IgG (H+L) at 1:10000 dilution. | Lysates/proteins: 25ug per lane. | Blocking buffer: 3% nonfat dry milk in TBST. | Detection: ECL Enhanced Kit . | Exposure time: 10s.



Immunofluorescence analysis of U2OS cells using EGR1 Rabbit pAb ([TA375768]) at dilution of 1:250 (40x lens). Blue: DAPI for nuclear staining.